

# AUTOLIFT SYSTEM

## INSTALLATION MANUAL FOR ADAPTER **DUCATO 244 ALKO**

### Contents

Front right adapter Ducato 244 Alko.....	2
Front left Adapter Ducato 244 Alko .....	3
Rear adapter Alko left/right.....	4
Rear Mounting Plate for Alko (HIGH) Chassis .....	8

## Front right adapter Ducato 244 Alko

Step 1:



Put the adapter most front possible, if necessary remove any sealing material for a perfect adherence, use a bottle jack to stop the bracket in the correct position and make the 8mm side hole then fix with the bolt.

Step 2:



Apply the clamp

**JACK WITH MOTOR TO THE OUTSIDE OF THE VEHICLE AND  
ROTATION REAR**



## Front left Adapter Ducato 244 Alko

Step 1: Use the same procedure of the right adapter.

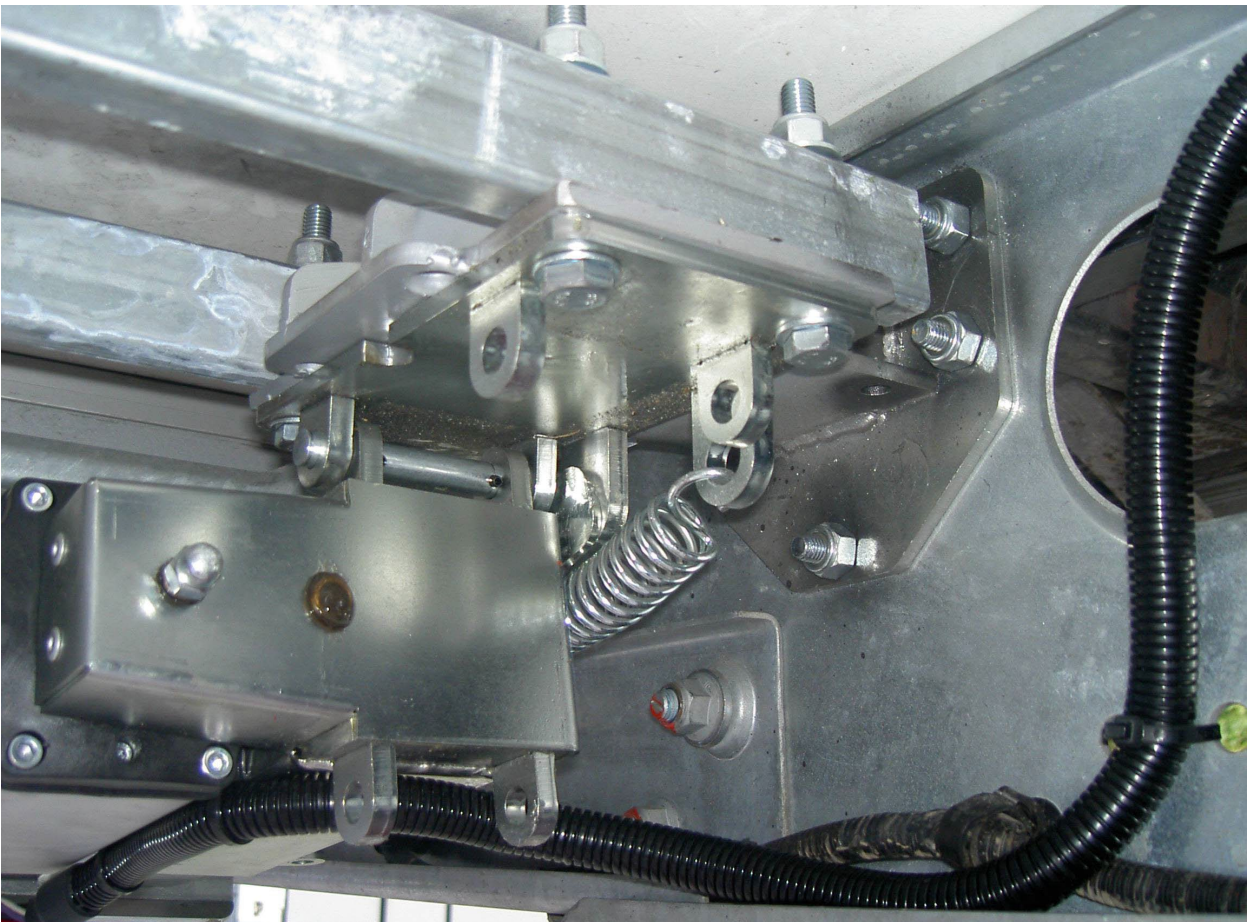


**JACK WITH MOTOR TO THE OUTSIDE OF THE VEHICLE AND  
ROTATION REAR**



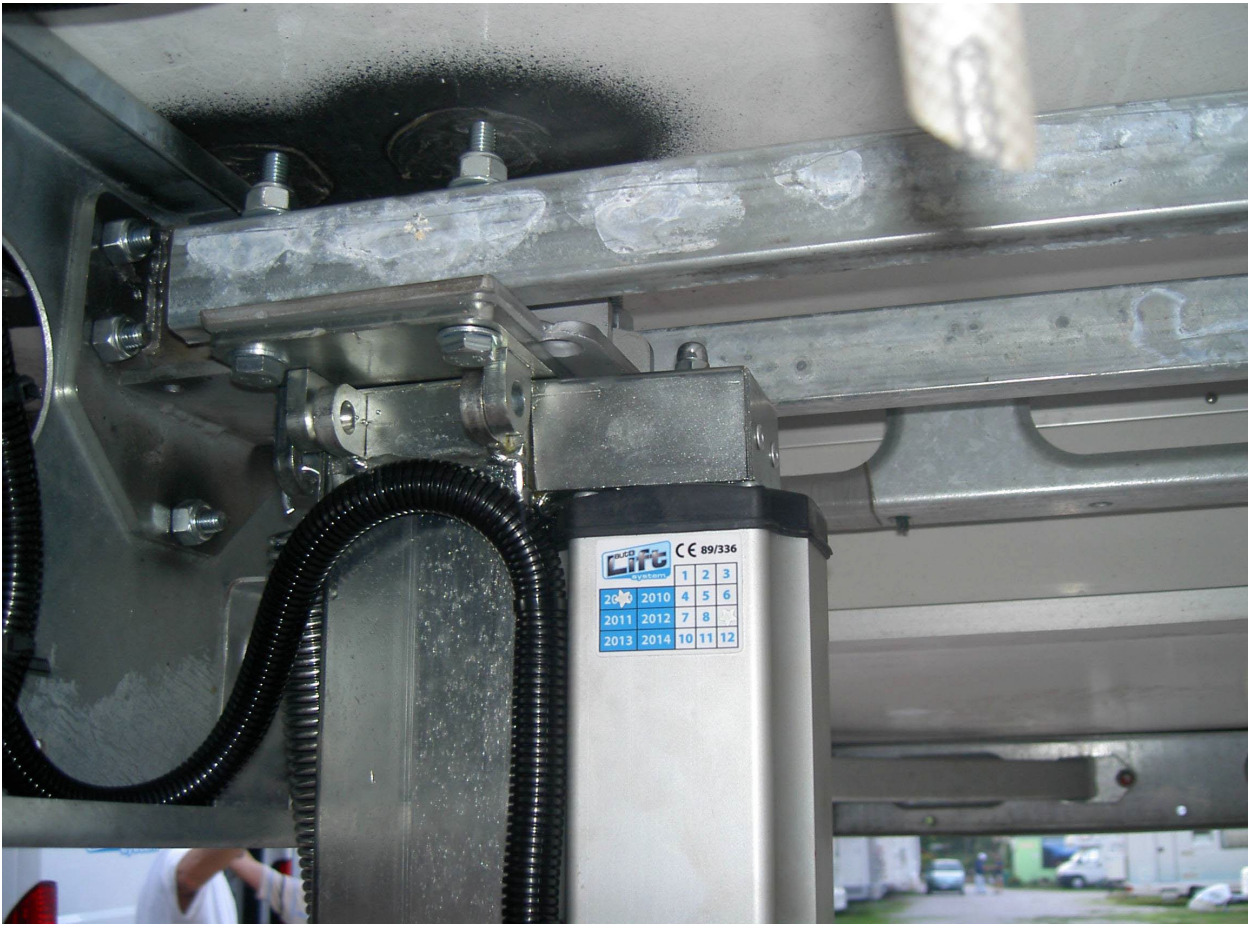
## Rear adapter Alko left/right

- Fix the adapter at 34cm minimum from the floor using the 10x30mm bolts.
- The adapters must be positioned and fixed perfectly specular.
- After having fixed the adapters position the link bars over, then make the 10mm holes where will be fixed the jacks.
- Then fix the highjack with the 10x70mm bolts (the bolts must tighten the adapter, the link bar and the jack together).
- The jacks can be rotate front or rear.
- Then adjust the limit switches (see installation manual).

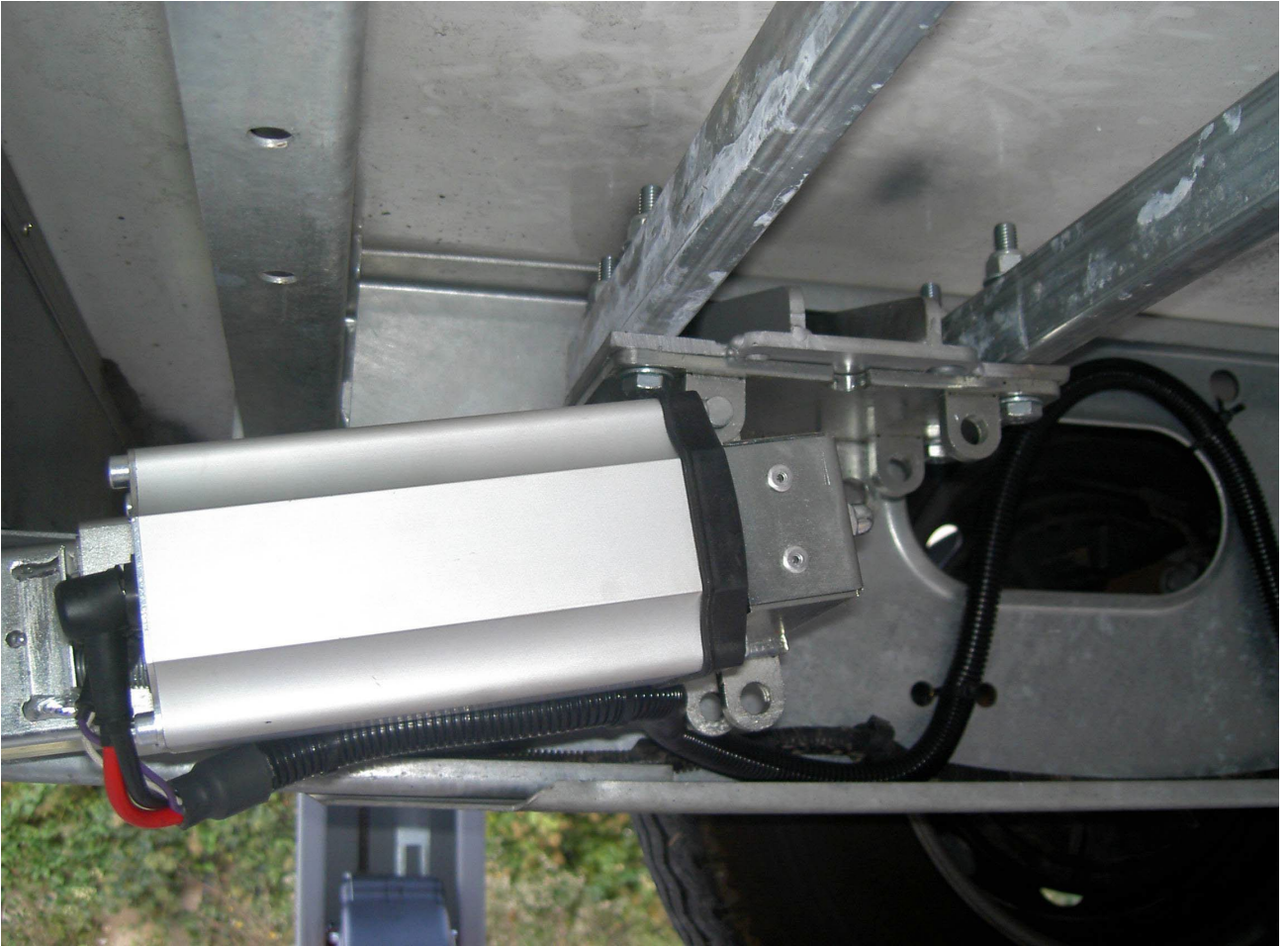






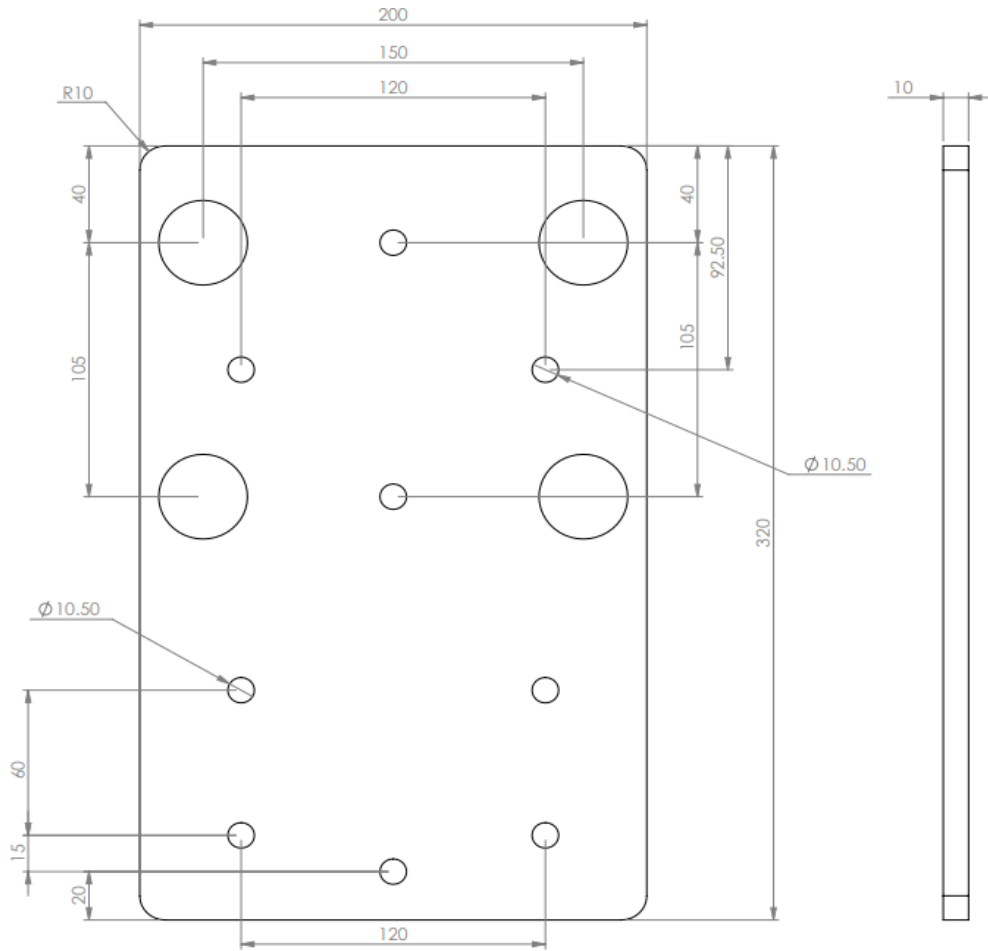






# Rear Mounting Plate for Alko (HIGH) Chassis

Part No. TI-0531-P-0021

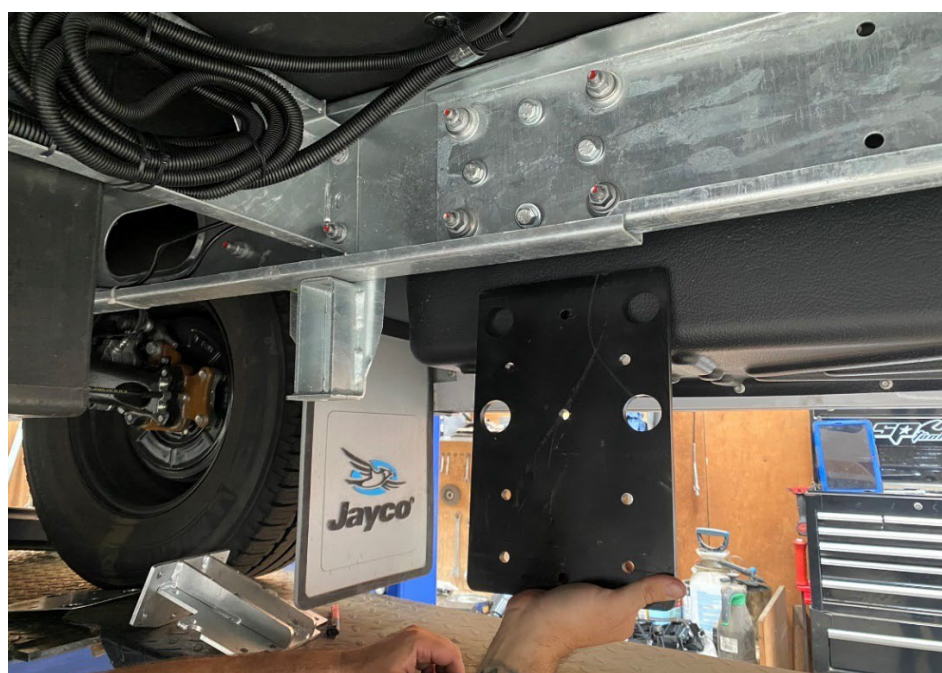




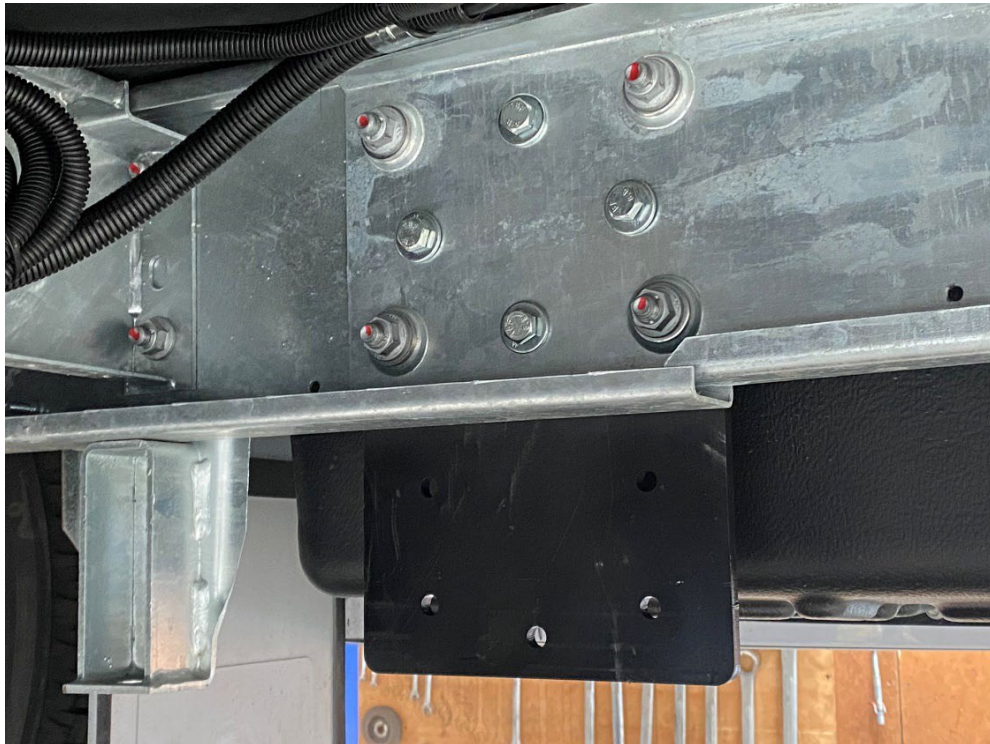
Location: Using the mount plate as a template, mark, and drill four 10mm holes at the chassis extension point as shown. The mounting plate is designed to mount over the outside of the chassis four extension bolts.



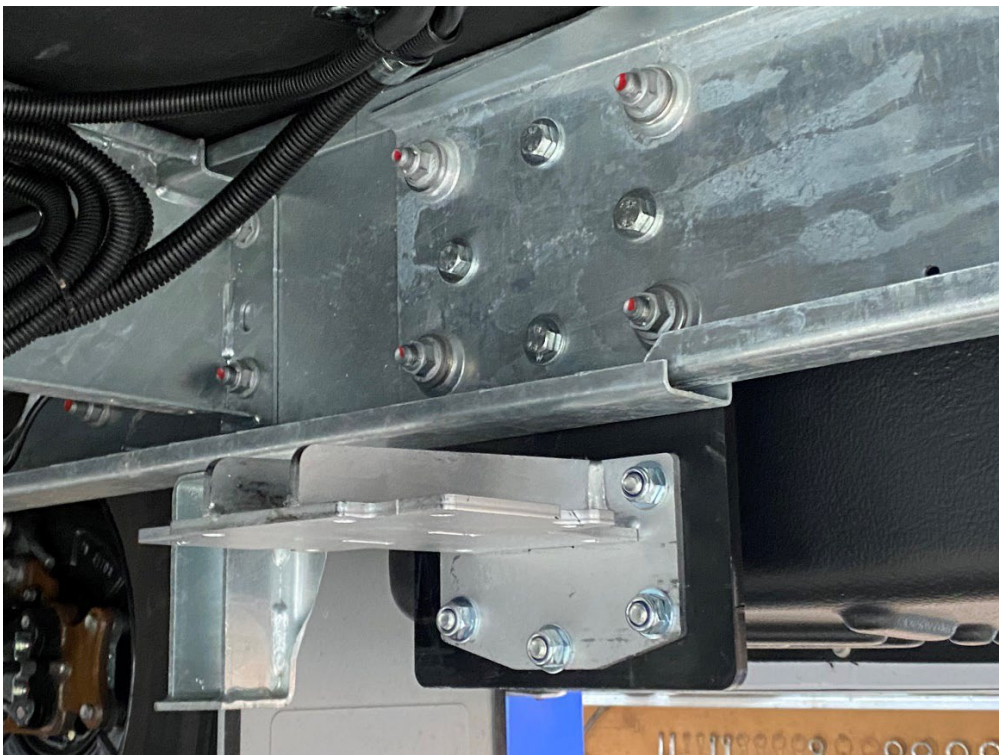
Use the bolts/nuts/washers provided to mount to the outside of chassis.



Once in position tighten bolts.

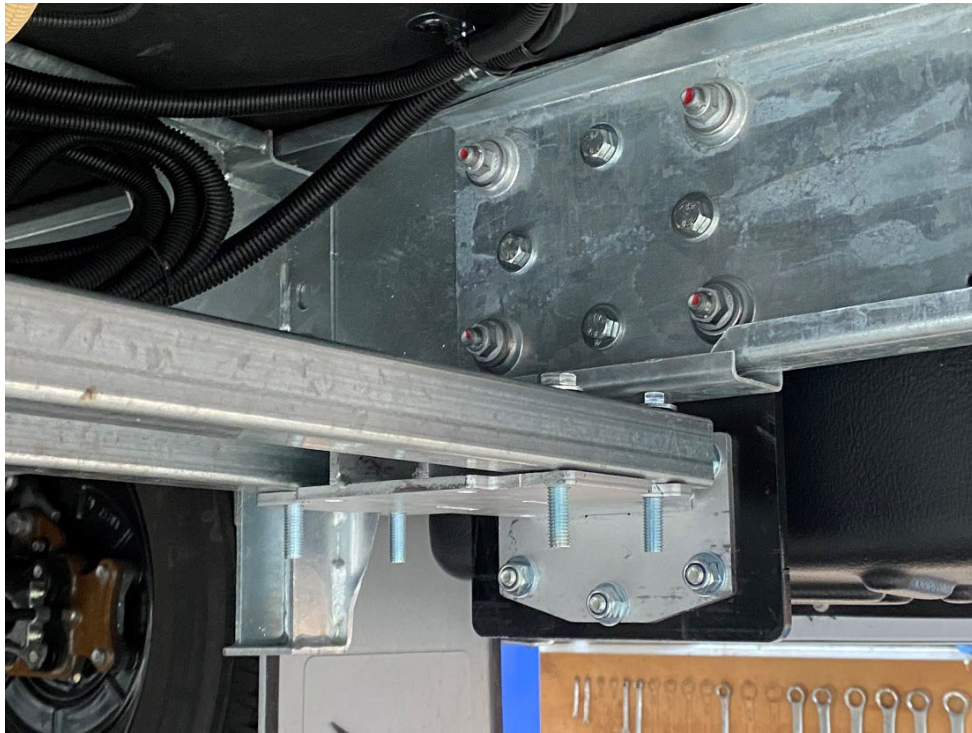


Install the jack bracing bracket by using the five 10mm bolts/nuts supplied as shown below.





Install the two cross braces supplied on the top of the jack bracing bracket as shown using the four longer 10mm bolts.



Install the jack leg into position as shown and tighten the bolts/nuts. Ensure washers are also used.

