

AUTOLIFT SYSTEM

INSTALLATION MANUAL FOR
ADAPTER DUCATO X290

EURO 6

Please subscribe to our Youtube channel TESA AUTOLIFT SYSTEM and see all tutorial videos.

Front adapter Ducato x290

1. REMOVE THE RUBBER STOPPER



2. INSERT THE PLATE IN THE SQUARE HOLE

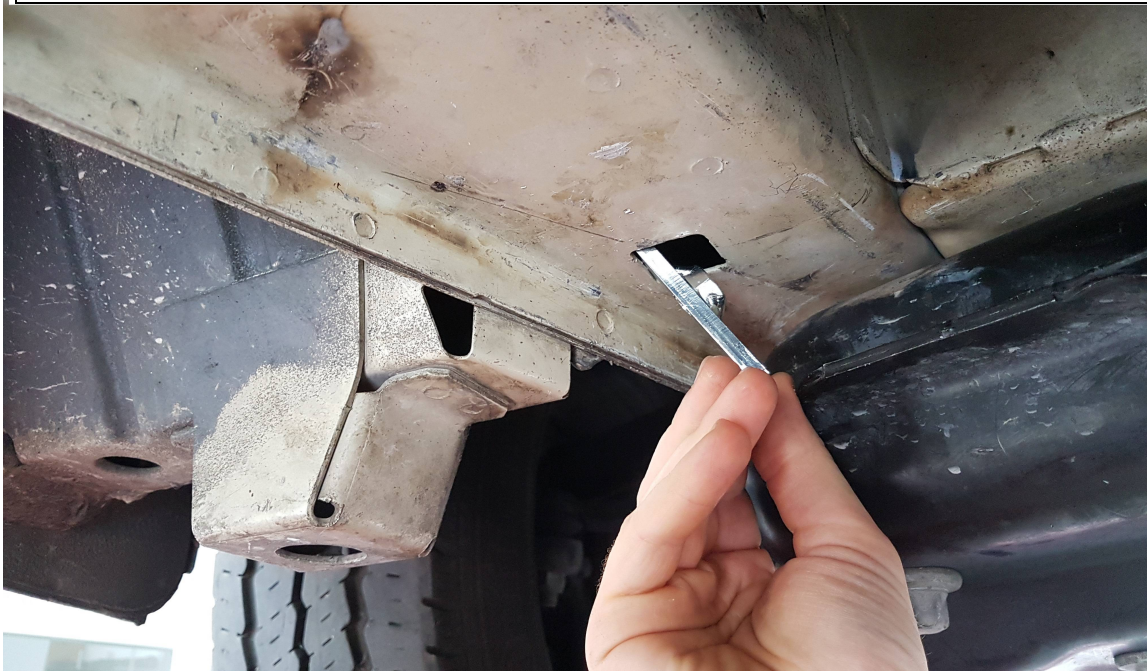


PLATE INSERTED CORRECTLY



Push the adapter most frontly possible



Fix the adapter with the special plate that you insert in the hole



Drill two 8mm holes



Fix with the 2 M8 bolts supplied



If necessary loose the bolts of the support of the tank and move it a few centimeter inside the vehicle

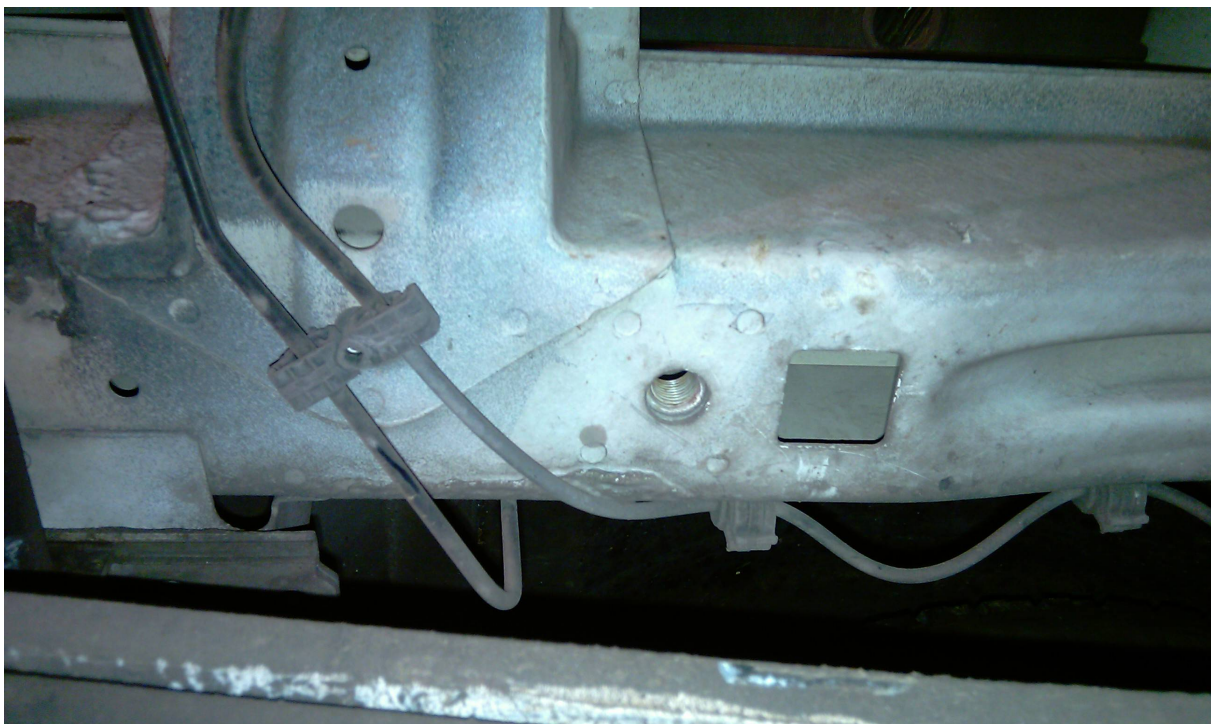
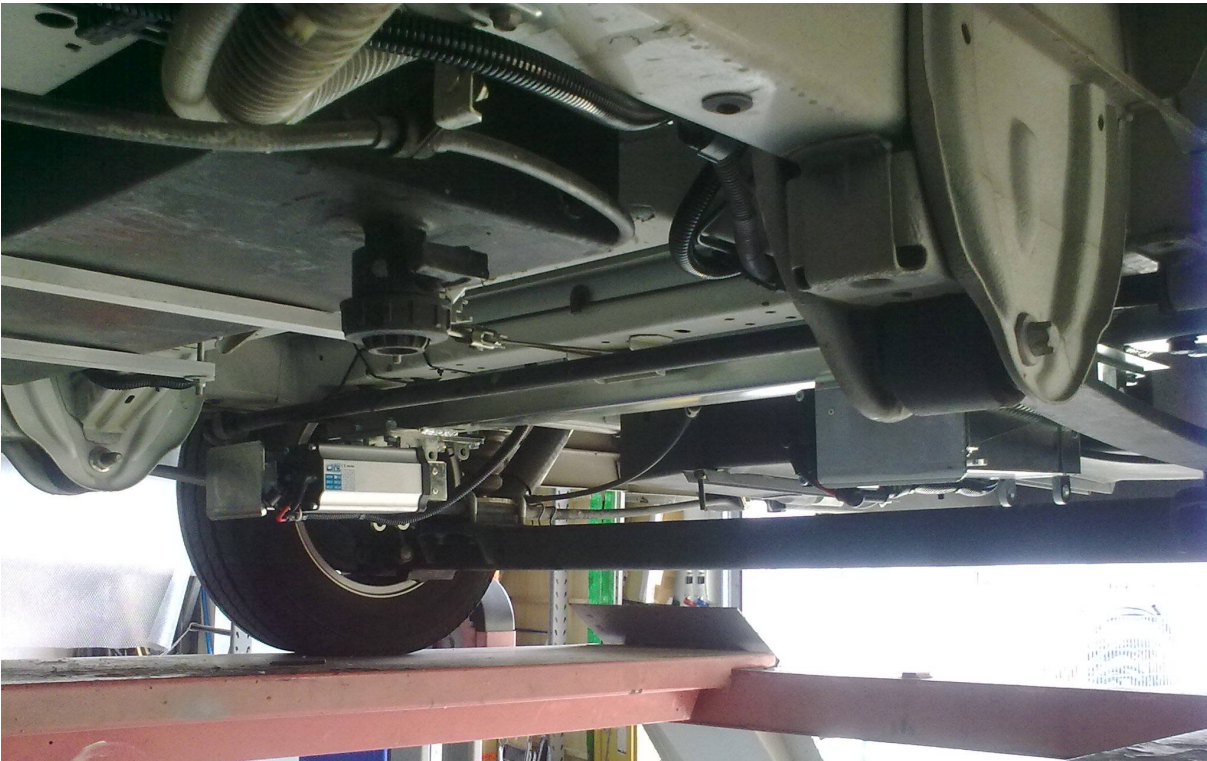
**JACK WITH MOTOR TO THE INSIDE OF THE VEHICLE AND
ROTATION REAR**

IS POSSIBLE FIX THE REAR ADAPTER IN FRONT OR REAR THE REAR AXLE

Rear adapter Ducato x250 (front the rear axle)

Step 1:

The rear adapter must be placed before the rear axle, at the point show in the photo



Rear adapter Ducato x250 (front the rear axle)

Step 2:



Insert and position the sealing plate (plate with **ONE HOLE**) then fix with the bolts (10x70 and 14x70).

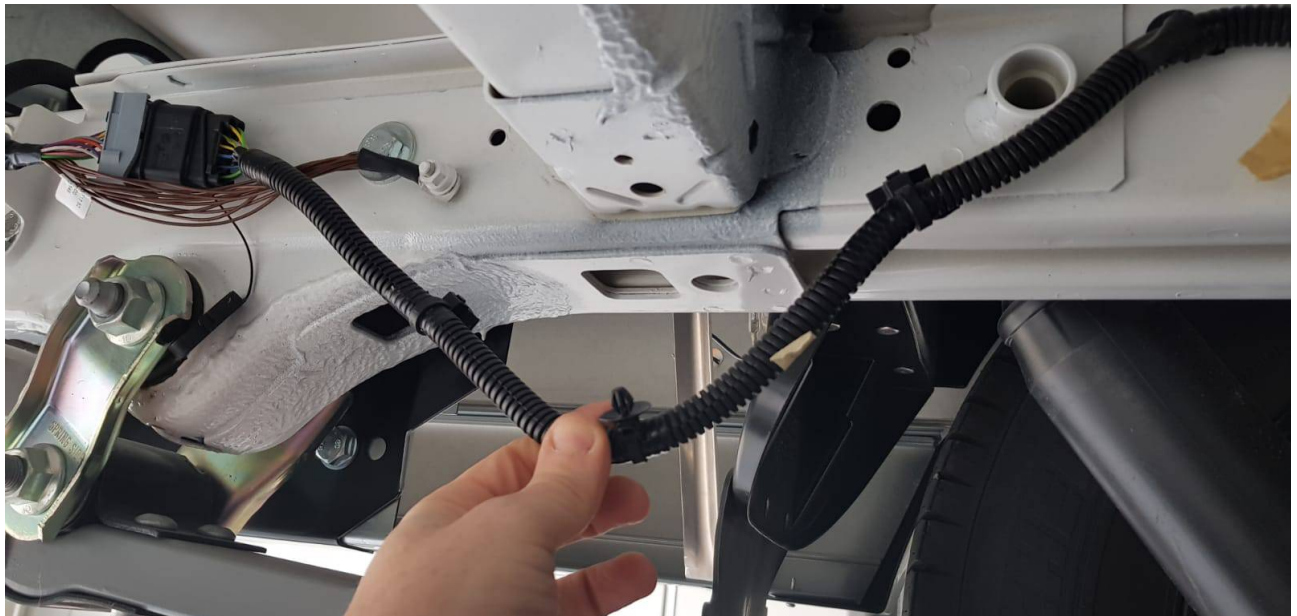
**BOTH REAR JACKS WITH ENGINE TO THE INSIDE OF THE VEHICLE
AND FRONT ROTATION**

Rear adapter Ducato x250 (rear the rear axle)

Step 1:

The rear adapter must be placed rear the rear axle at the point show in the photo, insert the special plates (with **TWO HOLE**) and pay attention at the electrical wiring, move and insert the adapter up it (see the photo)



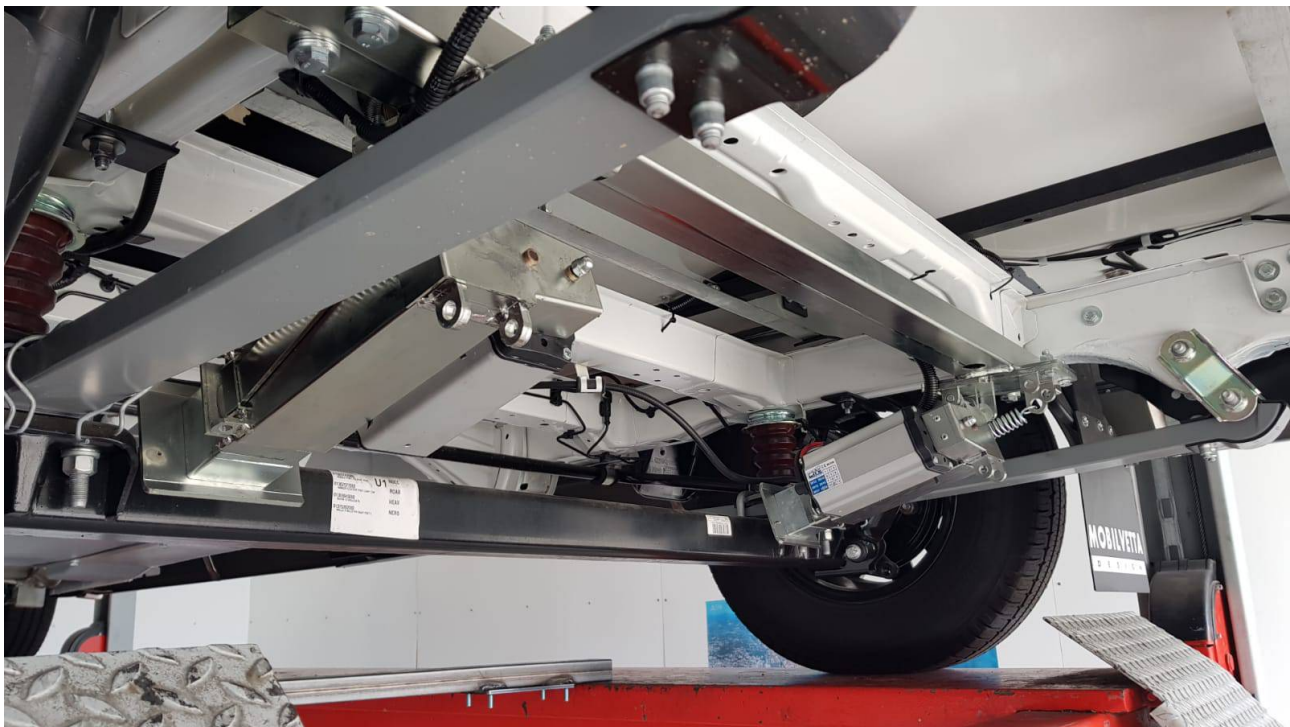
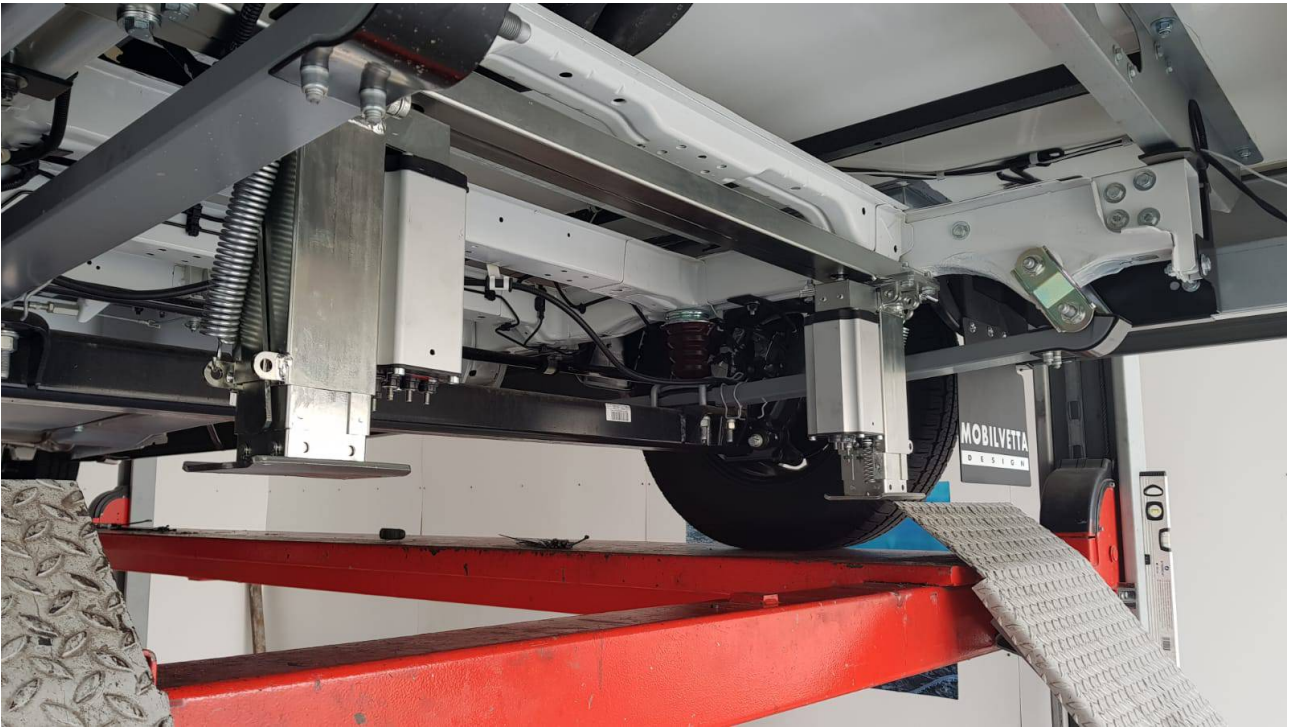


(remove the electrical wiring, insert the adapter up it)



Step 2:

Fix the adapter using the bolts supplied (4pc – 10x70), then fix the jacks.



BOTH REAR JACKS WITH ENGINE TO THE INSIDE OF THE VEHICLE AND ROTATION IN FRONT OR REAR