

AUTOLIFT SYSTEM

INSTALLATION MANUAL FOR
ADAPTER DUCATO X290

EURO 6 with rear ALKO

Please subscribe to our Youtube channel TESA AUTOLIFT SYSTEM and see all tutorial videos.

Front adapter Ducato x290

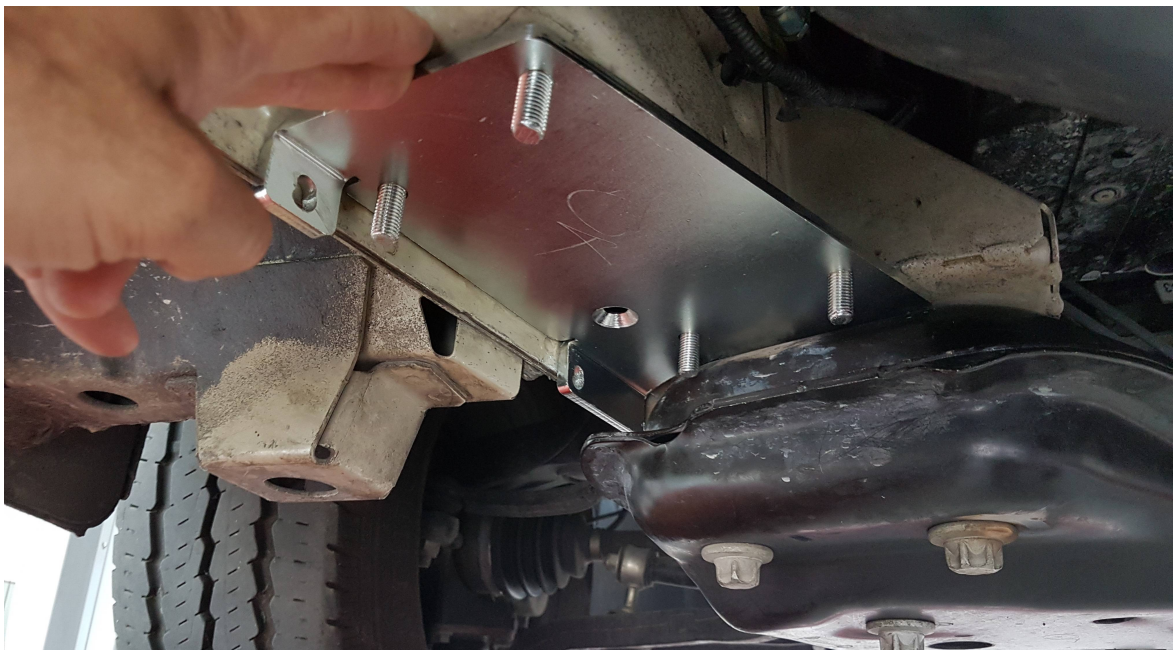
1. REMOVE THE RUBBER STOPPER



2. INSERT THE PLATE IN THE SQUARE HOLE



PLATE INSERTED CORRECTLY



Push the adapter most frontly possible



Fix the adapter with the special plate that you insert in the hole



Drill two 8mm holes



Fix with the 2 M8 bolts supplied



If necessary loose the bolts of the support of the tank and move it a few centimeter inside the vehicle

**JACK WITH MOTOR TO THE INSIDE OF THE VEHICLE AND
ROTATION REAR**

Rear adapter Alko left/right

- Fix the adapter at 34cm minimum from the floor using the 10x30mm bolts.
- The adapters must be positioned and fixed perfectly specular.
- After having fixed the adapters position the link bars over, then make the 10mm holes where will be fixed the jacks.
- Then fix the highjack with the 10x70mm bolts (the bolts must tighten the adapter, the link bar and the jack together).
- The jacks can be rotate front or rear.
- Then adjust the limit switches (see installation manual).

