

AUTOLIFT SYSTEM

INSTALLATION MANUAL FOR ADAPTER DUCATO X290

EURO 6 with rear ALKO

Contents

Front adapter Ducato x290.....	2
Rear adapter Alko left/right.....	6
Rear Mounting Plate for Alko (HIGH) Chassis.....	9

Front adapter Ducato x290

1. REMOVE THE RUBBER STOPPER



2. INSERT THE PLATE IN THE SQUARE HOLE



PLATE INSERTED CORRECTLY



Push the adapter most frontly possible



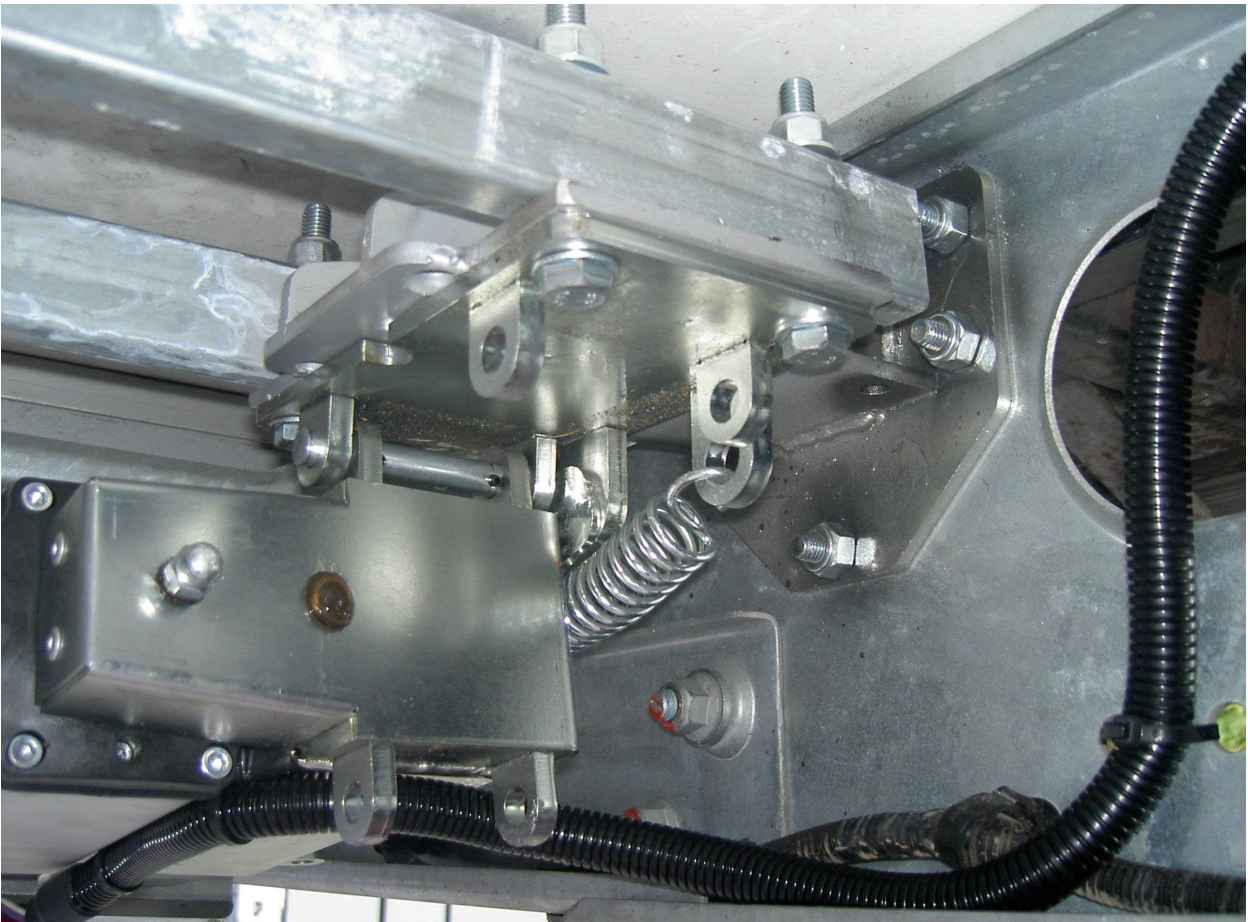
Fix the adapter with the special plate that you insert in the hole



Drill two 8mm holes

Rear adapter Alko left/right

- Fix the adapter at 34cm minimum from the floor using the 10x30mm bolts.
- The adapters must be positioned and fixed perfectly specular.
- After having fixed the adapters position the link bars over, then make the 10mm holes where will be fixed the jacks.
- Then fix the highjack with the 10x70mm bolts (the bolts must tighten the adapter, the link bar and the jack together).
- The jacks can be rotate front or rear.
- Then adjust the limit switches (see installation manual).

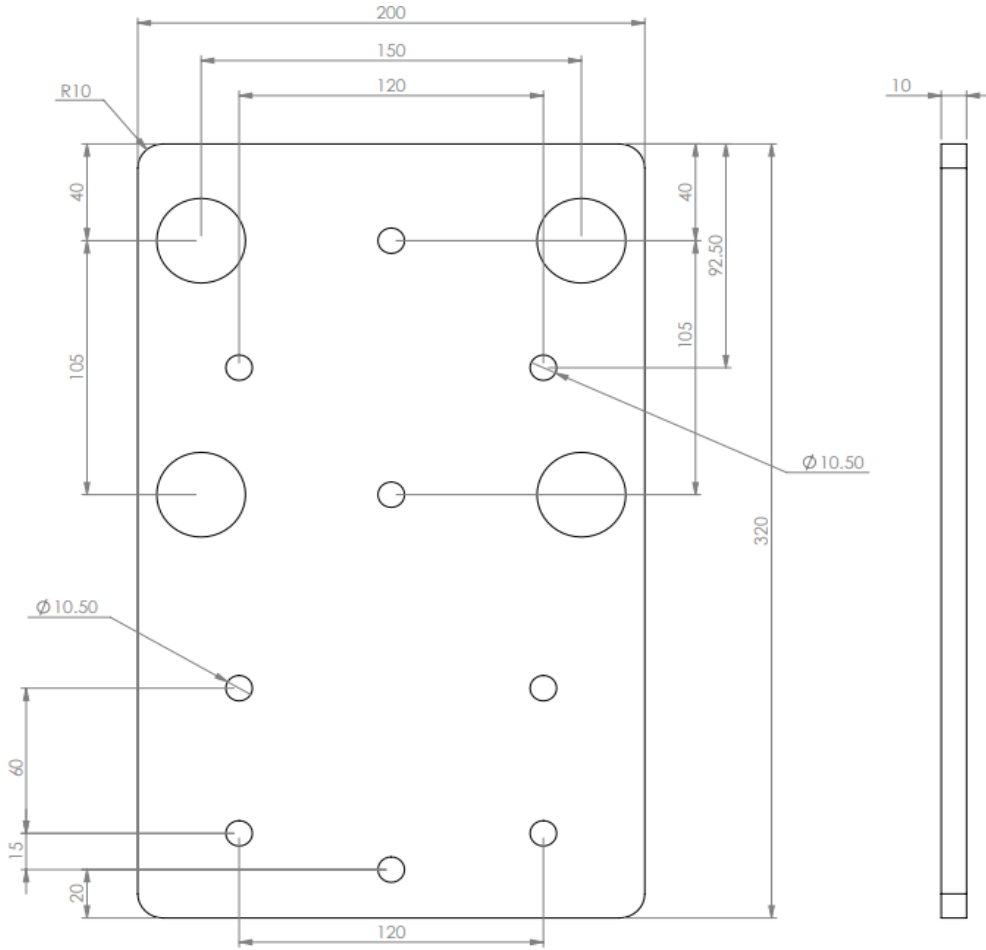






Rear Mounting Plate for Alko (HIGH) Chassis

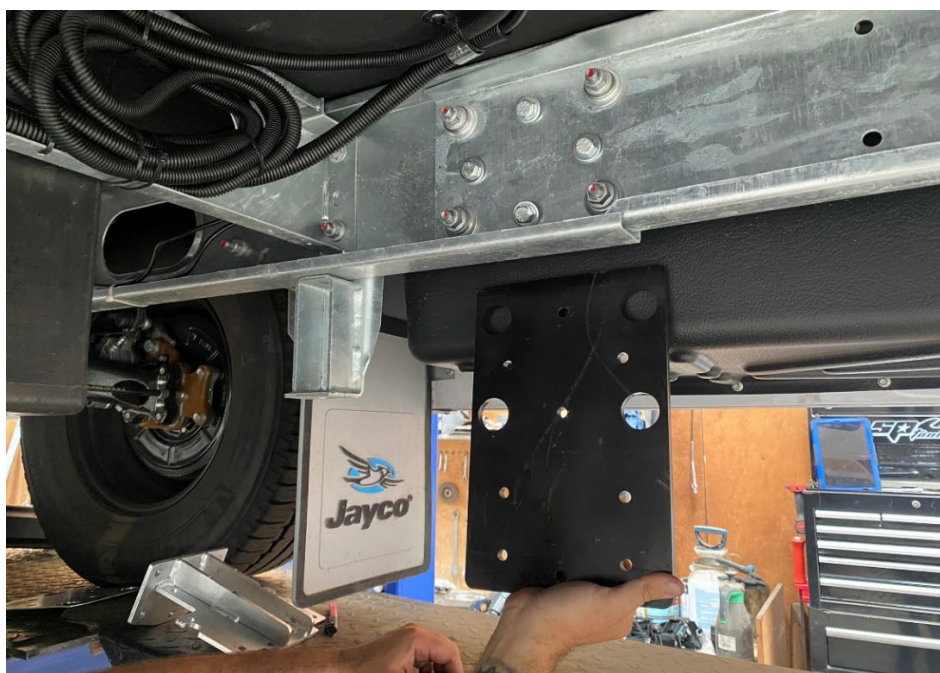
Part No. TI-0531-P-0021



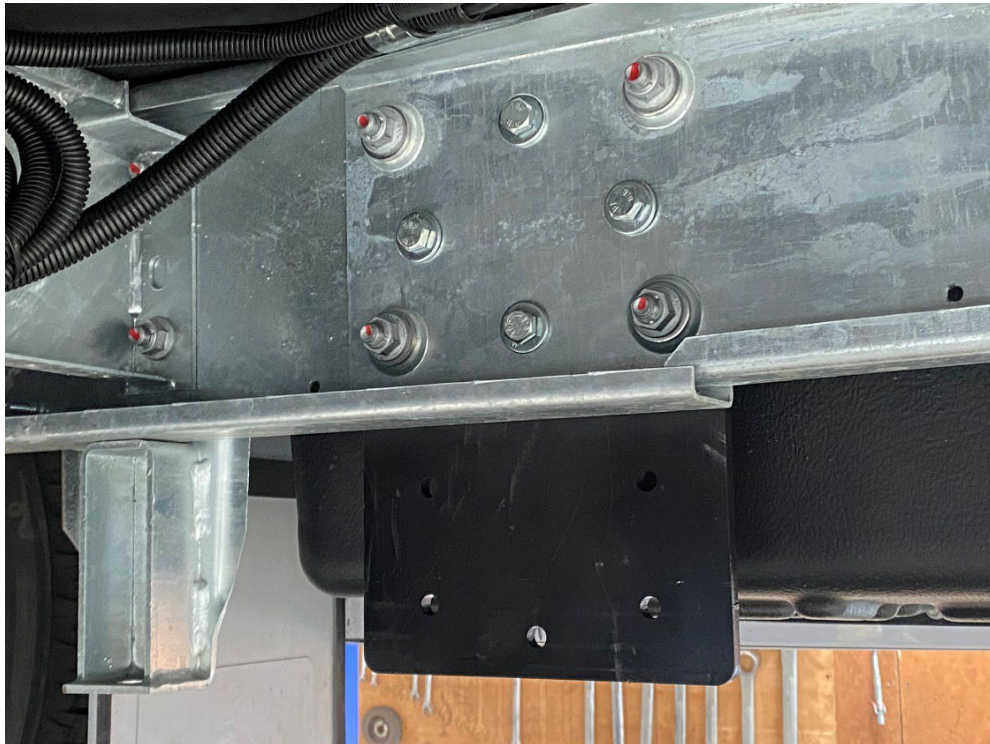
Location: Using the mount plate as a template, mark and drill four 10mm holes at the chassis extension point as shown. The mounting plate is design to mount over the outside of the chassis four extension bolts.



Use the bolts/nuts/washers provided to mount to the outside of chassis.



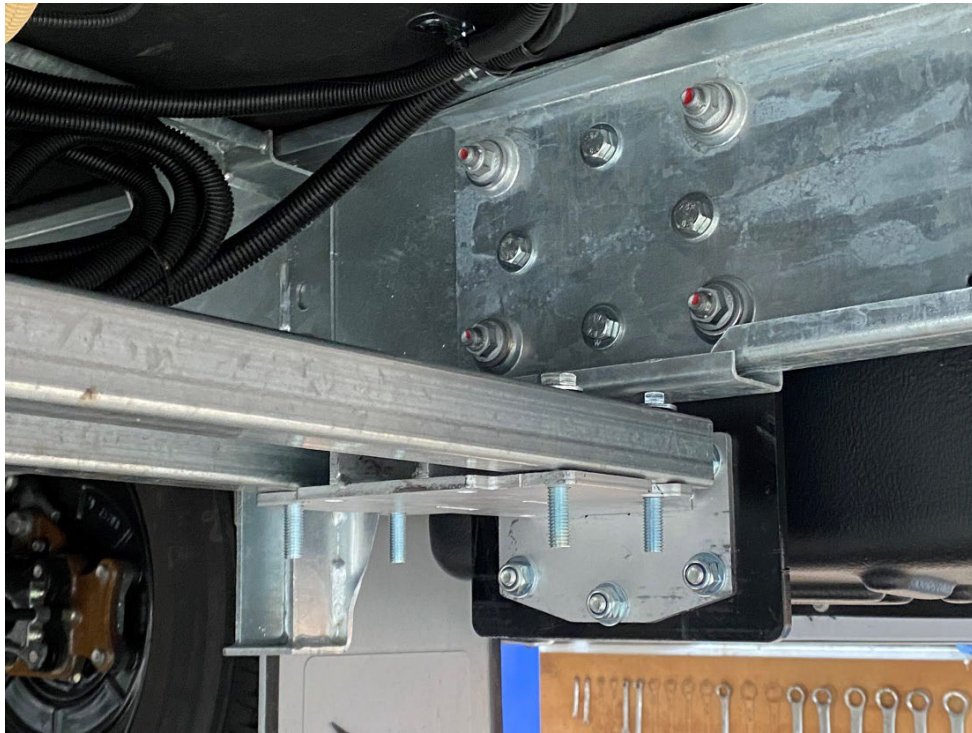
Once in position tighten bolts.



Install the jack bracing bracket by using the five 10mm bolts/nuts supplied as shown below.



Install the two cross braces supplied on the top of the jack bracing bracket as shown using the four longer 10mm bolts.



Install the jack leg into position as shown and tighten the bolts/nuts. Ensure washers are also used.

