

REDFOOT

LEVELLING

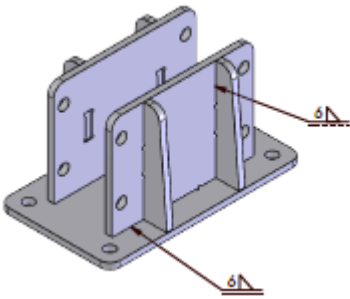
Autolift Caravan Bracket Install Manual



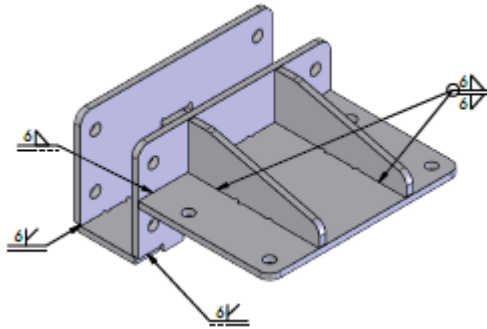
Bracket kit assembly includes:

4 x Brackets of the selected following variety

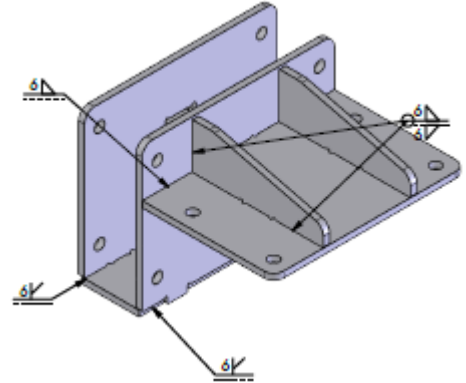
Under Chassis Mount



Side 4" Chassis Mount



Side 6" Chassis Mount



Bolt kit for mounting brackets

16 x m10 x 80 Bolts

16 x m10 x 30 Bolts

64 x Washers

32 x Nyloc Nuts

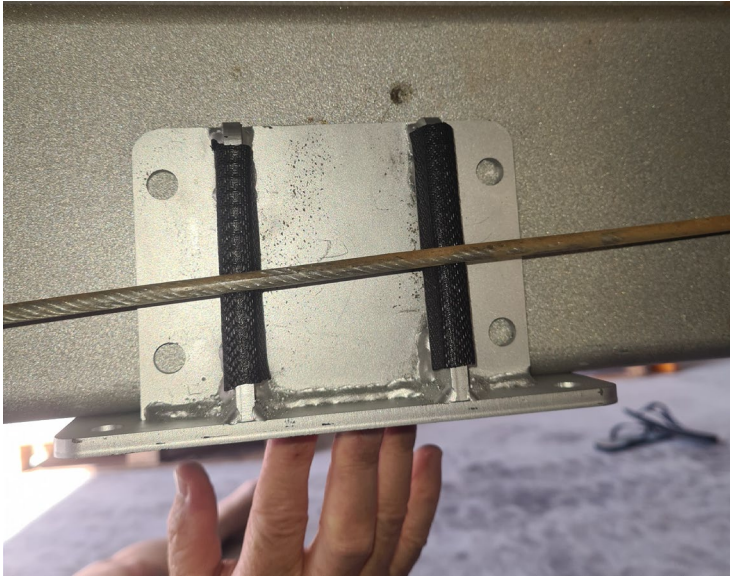
(Spacer kits will have extra m10 x 80.)

Optional spacers

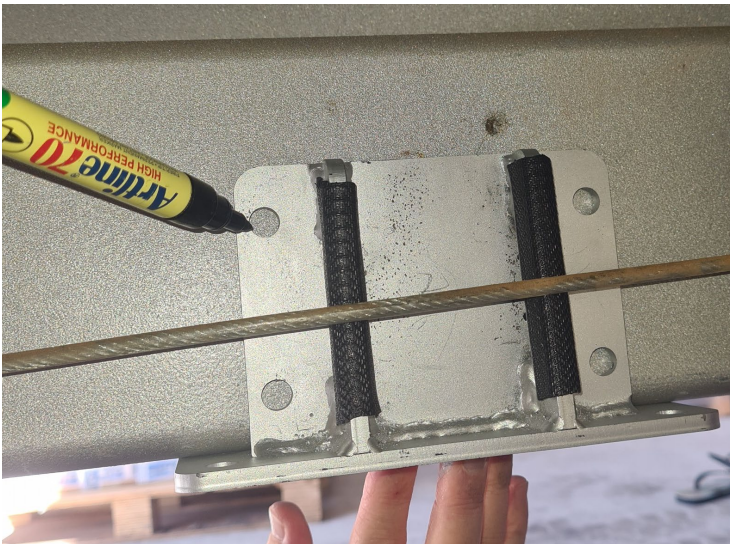
Tools required for install:

- Drill and 10.5mm drill bit
- Socket set and spanners
- High corrosion resistant paint (for holes being drilled)
- Optional impact and sockets

Bracket locations



It is important before installing to make note of obstructions. Take into consideration the swing of the jack once installed, handbrake wires and suspension mounts. Try to get both left and right-side brackets mounted as symmetrical as possible, this helps with weight distribution and system levelling capabilities.



Once suitable mounting locations are found, mark where each hole will need to be drilled with the bracket flush up against the bottom of the chassis.



Use a punch to mark the center of the bracket hole, this will help the drill bit from walking.



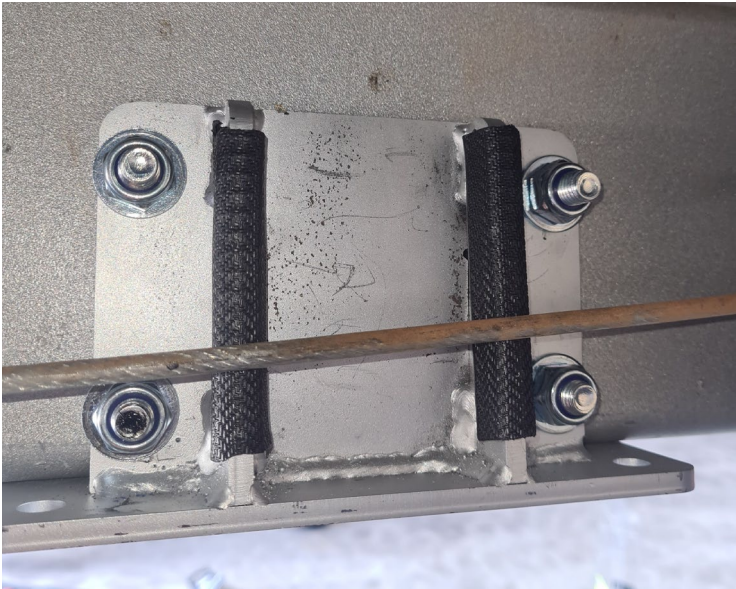
Before you start drilling see which side of your chassis has the wire loom. Make pilot holes with a 5mm drill bit, try not to go all the way through the chassis to avoid hitting any wires.



Step up your drill bit until you reach 10.5mm. As you can see here there is wires running through the chassis that need to be avoided.



You may need to use a screwdriver or wire to lift the wire inside the chassis in order to get the bolts to slide through. Have a washer on each bolt.



Using another washer and a nyloc nut, tighten with an impact or wrench.



This is now the time to measure the distance from the bottom of the bracket to the ground, the van chassis will need to be as level as possible, see Autolift install manual for how to set jack extensions. If you are using spacers, install them as shown with a washer.



lastly fasten your jacks to each bracket with a washer and nyloc nut using an impact or wrench.



The finished installation should look as shown.

Make sure while the chassis is level on flat concrete, both the front and rear jacks have 50-60mm from the bottom of the foot to the ground.

For further information contact:
Redfoot Levelling Pty Ltd
Unit 1, 7 Abeles Street
Baring QLD 4551
Ph 07 5228 0211
www.redfootlevelling.com.au