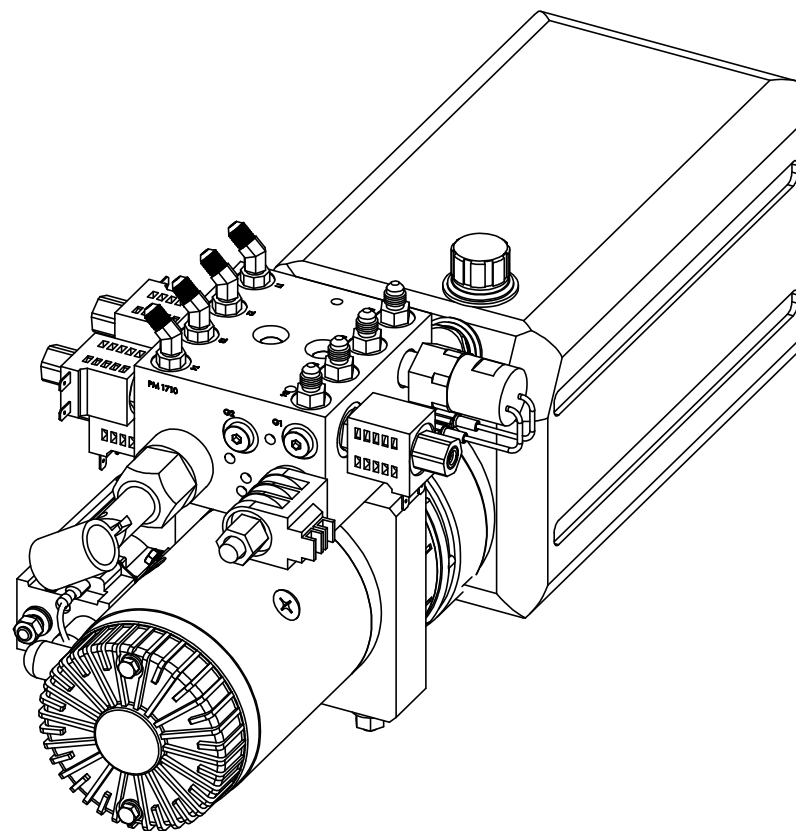


| DRAWING NUMBER | PART NAME                                     | QTY. |
|----------------|---|------|
| 1122           | FITTING- #4 OR MALE X #4 JIC                  | 4    |
| 1187           | SCREW-3/8-16 X 1 1/4 CUP PT SSS               | 2    |
| 1278           | NUT-3/8 FLANGE                                | 2    |
| 1440           | BOLT-1/4-20 X 3 HHCS GR8 Y2                   | 2    |
| 1444           | SOLENOID-HD PLTD                              | 1    |
| 1551KS (B)     | PUMP-KS HD 2112                               | 1    |
| 1710           | 1710 MANIFOLD-4 FUN                           | 1    |
| 1717           | VALVE-DIRECTIONAL VALVE #8<br>MANUAL OVERRIDE | 1    |
| 1720 (A)       | VALVE-HAND PUMP #10 CAVITY                    | 1    |
| 1724           | FITTING-#4 JIC X #4 O-RING X 45               | 4    |
| 1746           | COIL-#8 10 VOLT                               | 1    |
| 1898DD         | WASHER-1/4 LOCK                               | 2    |
| 1938DD         | WASHER-1/4 FLAT                               | 2    |
| 2006           | MOTOR-MTE 4.5 (12V)                           | 1    |
| 2007           | CAP-MTE BREATHER                              | 1    |
| 2042           | NUT-5/16-18 HEX ZINC                          | 1    |
| 2047           | SWITCH-PRESSURE SWITCH 1200 PSI-<br>use 2047K | 1    |
| 2128           | PLUG-#4 SOCKET HEAD ORING                     | 5    |
| 2307K          | RESERVOIR-KIT-MTE 8 QT-<br>2017,2542,1551     | 1    |
| 3073           | VALVE-DELTROL                                 | 5    |
| 3074           | COIL-DELTROL                                  | 5    |
| 6572           | HARNESS-10" POWER & GROUND<br>FEED            | 1    |
| 6648           | HARNESS, 4 FUNC PUMP GROUND<br>LEAD           | 1    |
| 6791KS (B)     | HARNESS, PUMP 4 FUNCTION 9 PIN<br>W/DIODE     | 1    |

## NOTE:

PARTS 1444, 2006, 2007, & 2307K  
ARE INCLUDED IN PART 1551 AS AN  
ASSEMBLY.

PARTS 6572, 6648, AND 6791KS  
ARE NOT SHOWN.

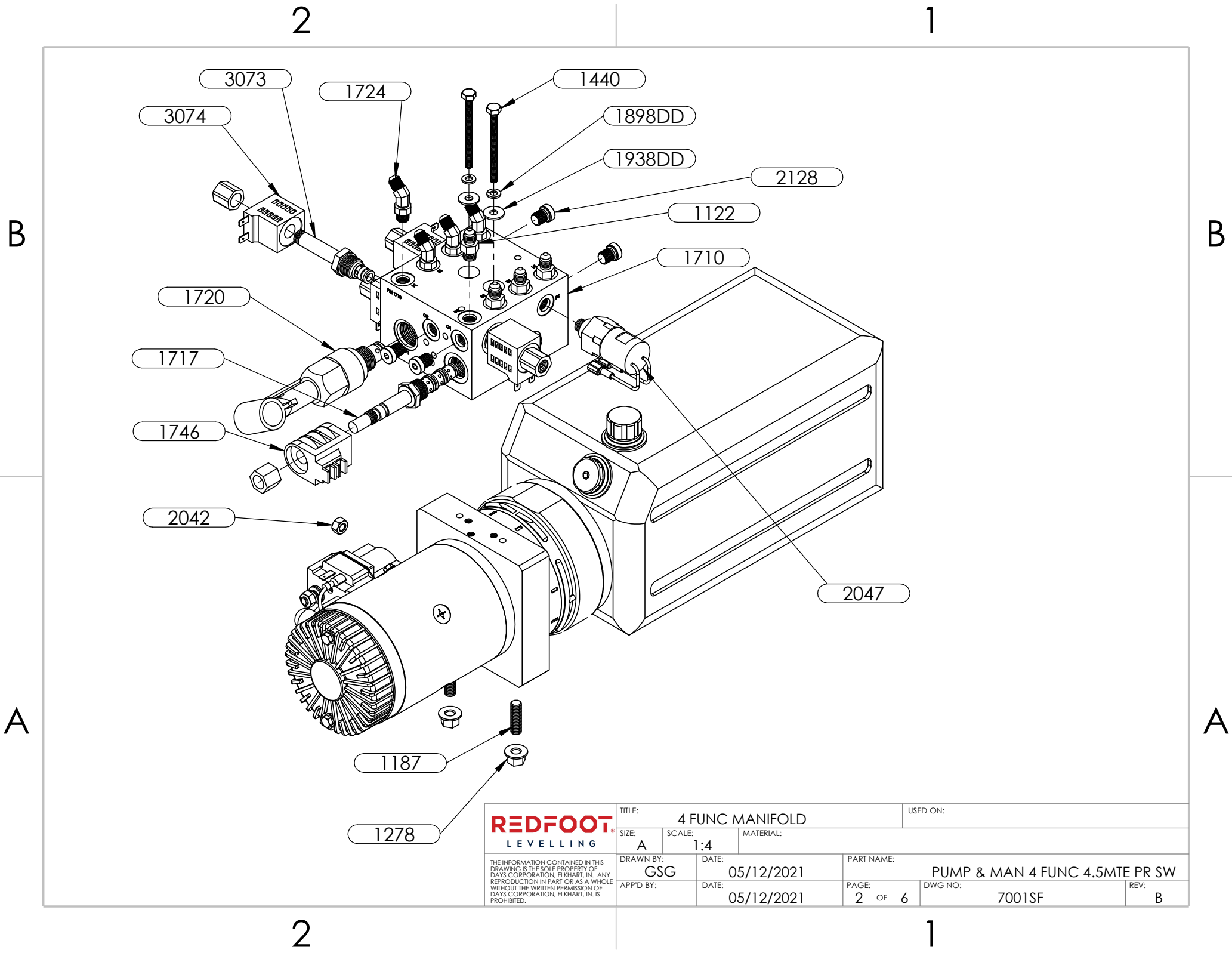


| REV. | REVISIONS  | DATE:     | BY: |
|------|--|-----------|-----|
| A    | ADDED THE HAND PUMP TO THE BUILD SO IT WOULD<br>HAVE A MANUAL OVERRIDE | 6/7/2023  | GSG |
| B    | 1551->1551KS; 6791->6791KS   | 9/22/2023 | GSG |

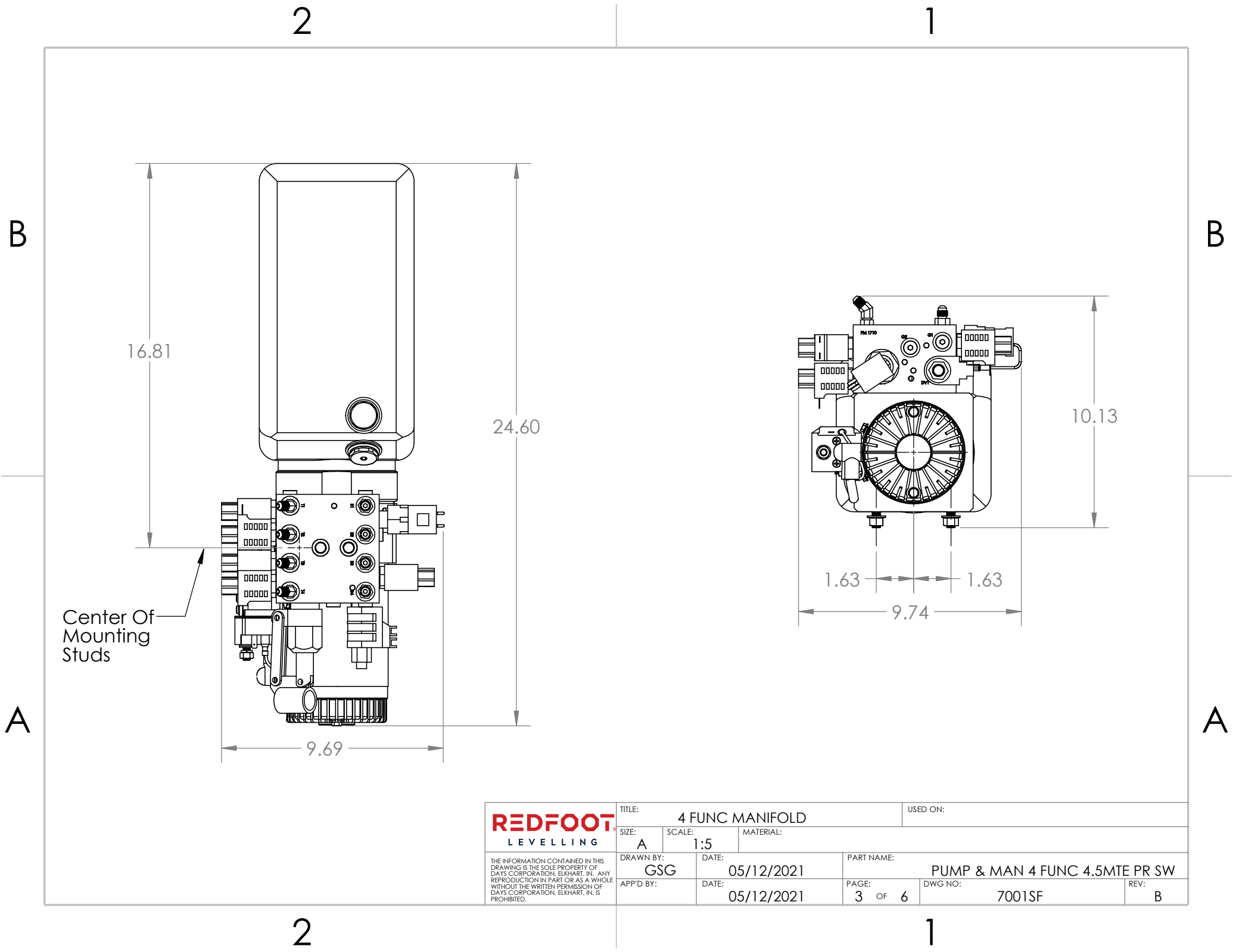
**REDFOOT**  
LEVELLING

THE INFORMATION CONTAINED IN THIS  
DRAWING IS THE SOLE PROPERTY OF  
DAYS CORPORATION, ELKHART, IN. ANY  
REPRODUCTION IN PART OR AS A WHOLE  
WITHOUT THE WRITTEN PERMISSION OF  
DAYS CORPORATION, ELKHART, IN, IS  
PROHIBITED.

|                           |                     |  |                   |
|---------------------------|---------------------|--|-------------------|
| TITLE:<br>4 FUNC MANIFOLD |                     | USED ON:                                     |                   |
| SIZE:<br>A                | SCALE:<br>1:4       | MATERIAL:                                    |                   |
| DRAWN BY:<br>GSG          | DATE:<br>05/12/2021 | PART NAME:<br>PUMP & MAN 4 FUNC 4.5MTE PR SW |                   |
| APP'D BY:                 | DATE:<br>05/12/2021 | PAGE:<br>1 OF 6                              | DWG NO:<br>7001SF |
|                           |                     | REV:<br>B                                    |                   |



|   |                        |                  |   |                |
|---|------------------------|------------------|---|----------------|
| <b>REDFOOT</b><br>LEVELLING   | TITLE: 4 FUNC MANIFOLD |                  | USED ON:                                  |                |
|   | SIZE: A                | SCALE: 1:4       | MATERIAL:                                 |                |
| THE INFORMATION CONTAINED IN THIS DRAWING IS THE SOLE PROPERTY OF DAYS CORPORATION, ELKHART, IN. ANY REPRODUCTION IN PART OR AS A WHOLE WITHOUT THE WRITTEN PERMISSION OF DAYS CORPORATION, ELKHART, IN. IS PROHIBITED. | DRAWN BY: GSG          | DATE: 05/12/2021 | PART NAME: PUMP & MAN 4 FUNC 4.5MTE PR SW |                |
|   | APP'D BY:              | DATE: 05/12/2021 | PAGE: 2 OF 6                              | DWG NO: 7001SF |
|   |                        |                  | REV: B                                    |                |



2

1

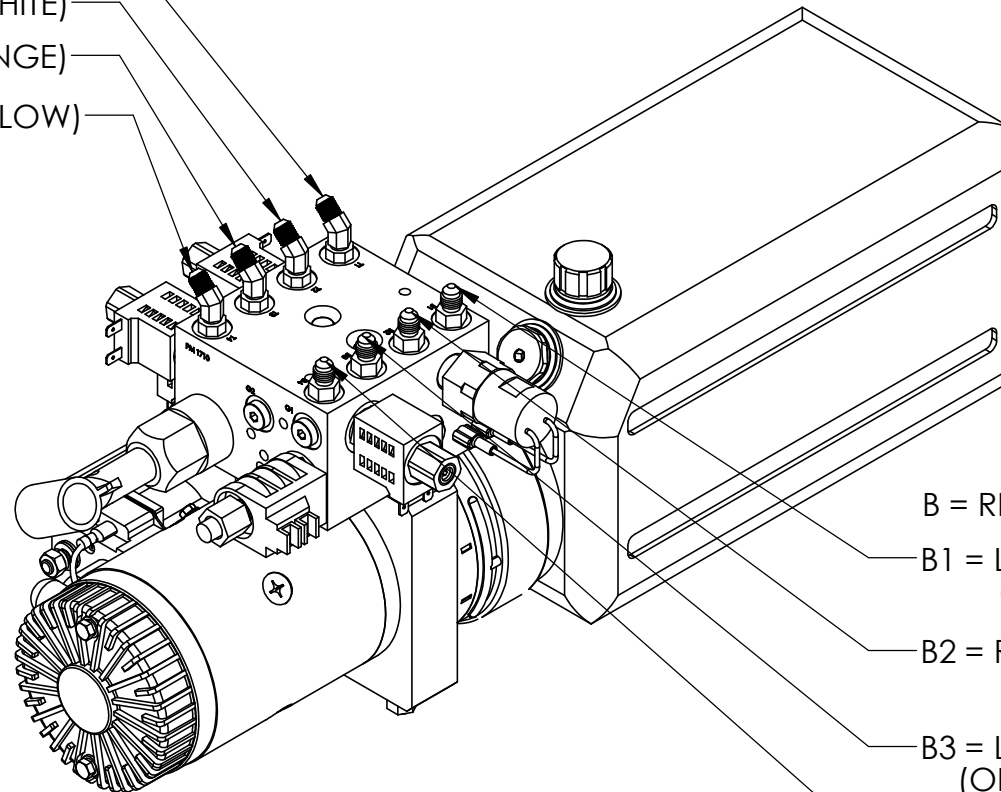
T = EXTEND FUNCTION

T1 = LEFT FRONT JACK (BROWN)

T2 = RIGHT FRONT JACK (WHITE)

T3 = LEFT REAR JACK (ORANGE)

T4 = RIGHT REAR JACK (YELLOW)



B = RETRACT FUNCTION

B1 = LEFT FRONT JACK  
(BROWN/BLACK)

B2 = RIGHT FRONT JACK  
(WHITE/BLACK)

B3 = LEFT REAR JACK  
(ORANGE/BLACK)

B4 = RIGHT REAR JACK  
(YELLOW/BLACK)

**REDFOOT**  
LEVELLING

THE INFORMATION CONTAINED IN THIS  
DRAWING IS THE SOLE PROPERTY OF  
DAYS CORPORATION, ELKHART, IN. ANY  
REPRODUCTION IN PART OR AS A WHOLE  
WITHOUT THE WRITTEN PERMISSION OF  
DAYS CORPORATION, ELKHART, IN, IS  
PROHIBITED.

|                        |                  |   |                |
|------------------------|------------------|---|----------------|
| TITLE: 4 FUNC MANIFOLD |                  | USED ON:                                  |                |
| SIZE: A                | SCALE: 1:4       | MATERIAL:                                 |                |
| DRAWN BY: GSG          | DATE: 05/12/2021 | PART NAME: PUMP & MAN 4 FUNC 4.5MTE PR SW |                |
| APP'D BY:              | DATE: 05/12/2021 | PAGE: 4 OF 6                              | DWG NO: 7001SF |
|                        |                  |   | REV: B         |

2

1

2

1

18GA WHITE 12VDC RIGHT FRONT  
JACK-16GA BLACK GROUND

18GA YELLOW 12VDC RIGHT REAR  
JACK-16GA BLACK GROUND

14ga GREEN 12VDC DIRECTIONAL  
VALVE- 16ga BLACK GROUND

14ga BLUE

18GA ORANGE 12VDC LEFT REAR  
JACK-16GA BLACK GROUND

12VDC+ FROM BATTERY

14ga BLUE 12VDC RETRACT  
VALVE- 16ga BLACK GROUND

18GA BROWN 12VDC LEFT FRONT  
JACK-16GA BLACK GROUND

**REDFOOT**  
LEVELLING

THE INFORMATION CONTAINED IN THIS  
DRAWING IS THE SOLE PROPERTY OF  
DAYS CORPORATION, ELKHART, IN. ANY  
REPRODUCTION IN PART OR AS A WHOLE  
WITHOUT THE WRITTEN PERMISSION OF  
DAYS CORPORATION, ELKHART, IN, IS  
PROHIBITED.

TITLE: 4 FUNC MANIFOLD

USED ON:

SIZE:  
A

SCALE:  
1:4

MATERIAL:

DRAWN BY:  
GSG

DATE:  
05/12/2021

PART NAME:

PUMP & MAN 4 FUNC 4.5MTE PR SW

APP'D BY:

DATE:  
05/12/2021

PAGE:

5 OF 6

DWG NO:

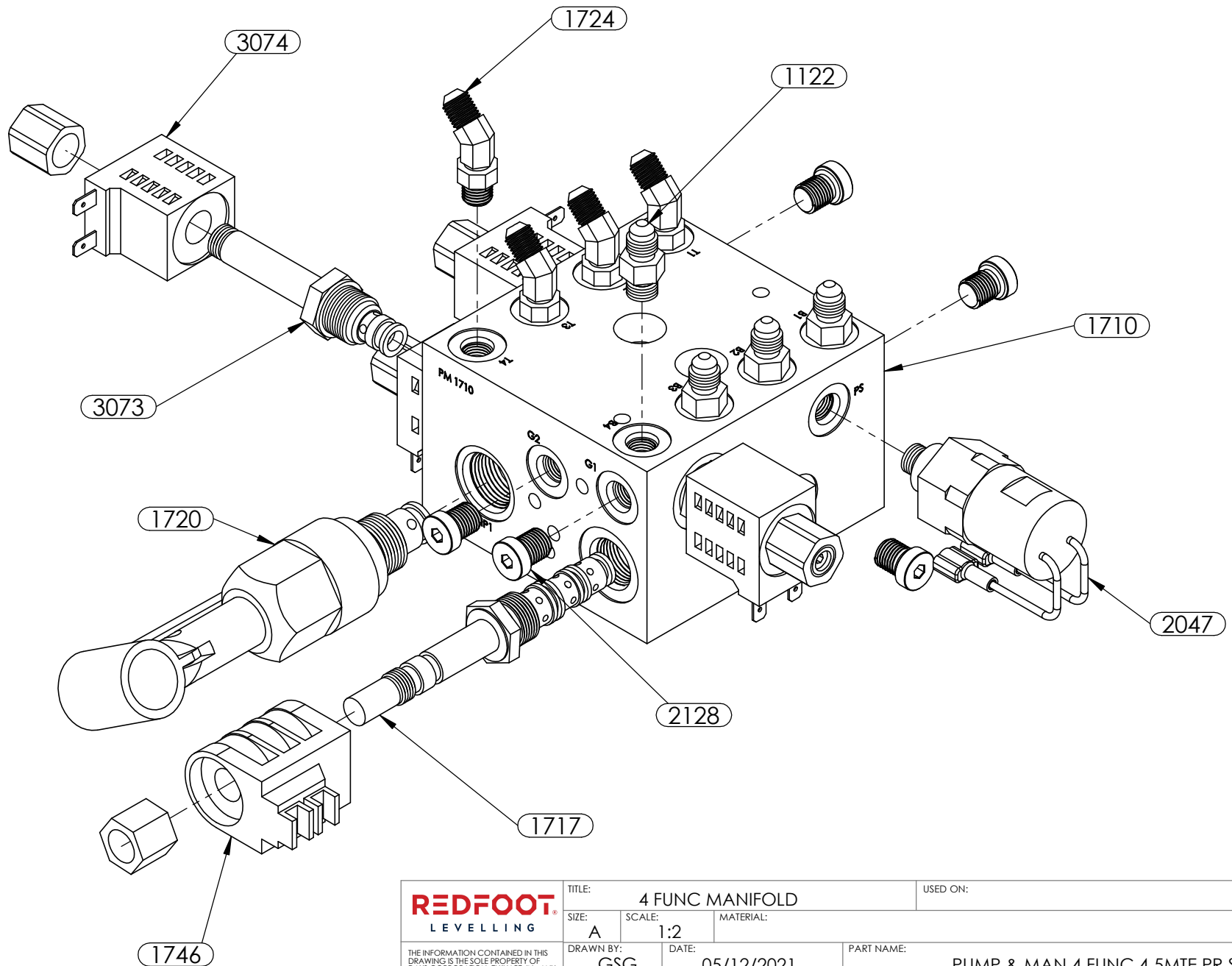
7001SF

REV:

B

2

1



|  |               |  |                     |                     |                   |
|--|---------------|--|---------------------|---------------------|-------------------|
| <div>REDFOOT®</div> <div>LEVELLING</div>   |               | TITLE:<br>4 FUNC MANIFOLD                    |                     | USED ON:            |                   |
| SIZE:<br>A   | SCALE:<br>1:2 | MATERIAL:                                    |                     |                     |                   |
| <div>THE INFORMATION CONTAINED IN THIS DRAWING IS THE SOLE PROPERTY OF DAYS CORPORATION, ELKHART, IN. ANY REPRODUCTION IN PART OR AS A WHOLE WITHOUT THE WRITTEN PERMISSION OF DAYS CORPORATION, ELKHART, IN. IS PROHIBITED.</div> |               | DRAWN BY:<br>GSG                             |                     | DATE:<br>05/12/2021 |                   |
|  |               | PART NAME:<br>PUMP & MAN 4 FUNC 4.5MTE PR SW |                     |                     |                   |
|  |               | APP'D BY:                                    | DATE:<br>05/12/2021 | PAGE:<br>6 OF 6     | DWG NO:<br>7001SF |

THE INFORMATION CONTAINED IN THIS DRAWING IS THE SOLE PROPERTY OF DAYS CORPORATION, ELKHART, IN. ANY REPRODUCTION IN PART OR AS A WHOLE WITHOUT THE WRITTEN PERMISSION OF DAYS CORPORATION, ELKHART, IN IS PROHIBITED.