



## Fiat Ducato 'EQ Smart Level' System

The Fiat Ducato EQ Smart Level system is custom-designed for all Fiat Ducato motorhome chassis'. It is no wonder this system has become the number one levelling choice for Fiat Ducato owners.

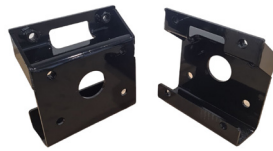


- ✓ Bluetooth capability to allow remote operation on your smart device
- ✓ One touch, push button Auto-level operation
- ✓ Audio and visual prompts notify user when levelling is in progress and complete

### Benefits

- ✓ Customised bolt on brackets
- ✓ Large foot pads to prevent sinking
- ✓ Simple plug and play installation
- ✓ Huge lifting capacity
- ✓ Stow jacks quickly and easily with auto "All-Retract" feature
- ✓ User-friendly design, ensuring effortless operation
- ✓ Prevents vehicle rocking and motion
- ✓ Light weight
- ✓ Manual override feature comes standard
- ✓ Field adjustable null for optimal levelling

# Technical Information



Specification	Fiat Ducato ALKO Chassis (High)	Fiat Ducato ALKO Chassis (LOW)	Fiat Ducato CAB Chassis (High)	Fiat Ducato CAB Chassis (LOW)
Part Number	FID-ALKO-HISL	FID-ALKO-LOW-SL	FID-HI-SL	FID-LO-SL
Cylinder Size	2 x 13" + 2 x two-stage telescopic (2" bore)	4 x two-stage telescopic (2" bore)	2 x 13" + 2 x two-stage telescopic (2" bore)	4 x two-stage telescopic (2" bore)
Stroke	330mm	330mm	330mm	330mm
Set Travel Clearance	200mm	200mm	200mm	200mm
Pump Type	12Vdc (800W) Hydraulic	12Vdc (800W) Hydraulic	12Vdc (800W) Hydraulic	12Vdc (800W) Hydraulic
Harness	Yes	Yes	Yes	Yes
Hose Kit	Custom	Custom	Custom	Custom
Brackets	Bolt-on	Bolt-on	Bolt-on	Bolt-on
Manual Override	Yes	Yes	Yes	Yes
Foot Plate Diameter	250mm	250mm	180mm	180mm
System Weight (Dry) <small>Add approx. 10kg for fluid + hoses</small>	75kg	70kg	75kg	73kg
Max Lift Capacity	8 tonnes	8 tonnes	8 tonnes	8 tonnes
Battery Size Minimum	200 Amp Hour @12Vdc	200 Amp Hour @12Vdc	200 Amp Hour @12Vdc	200 Amp Hour @12Vdc
Bluetooth Capability	Yes	Yes	Yes	Yes
Pump Dimensions	L 520mm x W 240mm x H 225mm	L 520mm x W 240mm x H 225mm	L 520mm x W 240mm x H 225mm	L 520mm x W 240mm x H 225mm
Warranty (AUS/NZ)	12 months	12 months	12 months	12 months



**REDFOOT**  
LEVELLING

Unit 1, 7 Abeles Street

Baringa QLD 4551

☎ (07) 5228 0211

✉ info@redfootlevelling.com

🌐 www.redfootlevelling.com

DEALER INFORMATION