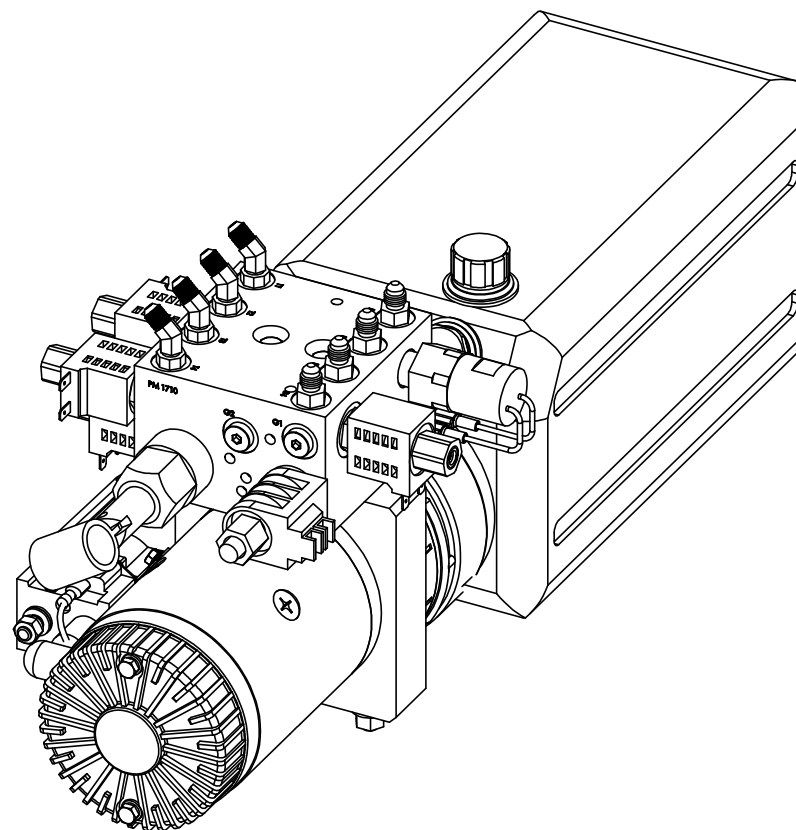


DRAWING NUMBER	PART NAME	QTY.
1122	FITTING- #4 OR MALE X #4 JIC	4
1187	SCREW-3/8-16 X 1 1/4 CUP PT SSS	2
1278	NUT-3/8 FLANGE	2
1440	BOLT-1/4-20 X 3 HHCS GR8 Y2	2
1444	SOLENOID-HD PLTD	1
1551KS (B)	PUMP-KS HD 2112	1
1710	1710 MANIFOLD-4 FUN	1
1717	VALVE-DIRECTIONAL VALVE #8 MANUAL OVERRIDE	1
1720 (A)	VALVE-HAND PUMP #10 CAVITY	1
1724	FITTING-#4 JIC X #4 O-RING X 45	4
1746	COIL-#8 10 VOLT	1
1898DD	WASHER-1/4 LOCK	2
1938DD	WASHER-1/4 FLAT	2
2006	MOTOR-MTE 4.5 (12V)	1
2007	CAP-MTE BREATHER	1
2042	NUT-5/16-18 HEX ZINC	1
2047	SWITCH-PRESSURE SWITCH 1200 PSI- use 2047K	1
2128	PLUG-#4 SOCKET HEAD ORING	5
2307K	RESERVOIR-KIT-MTE 8 QT- 2017,2542,1551	1
3073	VALVE-DELTROL	5
3074	COIL-DELTROL	5
6572	HARNESS-10" POWER & GROUND FEED	1
6648	HARNESS, 4 FUNC PUMP GROUND LEAD	1
6791KS (B)	HARNESS, PUMP 4 FUNCTION 9 PIN W/DIODE	1

NOTE:

PARTS 1444, 2006, 2007, & 2307K
ARE INCLUDED IN PART 1551 AS AN
ASSEMBLY.

PARTS 6572, 6648, AND 6791KS
ARE NOT SHOWN.

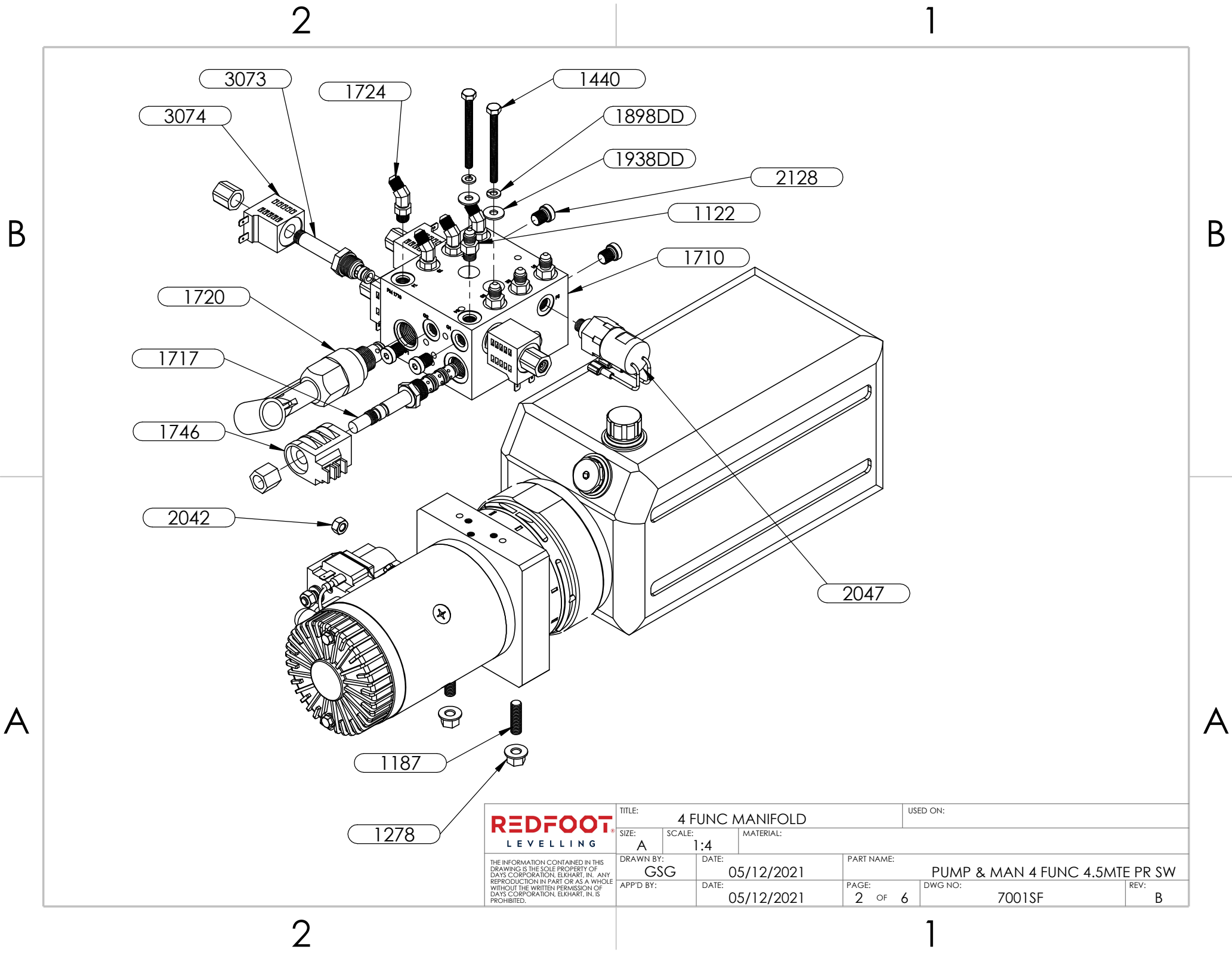


REV.	REVISIONS	DATE:	BY:
A	ADDED THE HAND PUMP TO THE BUILD SO IT WOULD HAVE A MANUAL OVERRIDE	6/7/2023	GSG
B	1551->1551KS; 6791->6791KS	9/22/2023	GSG

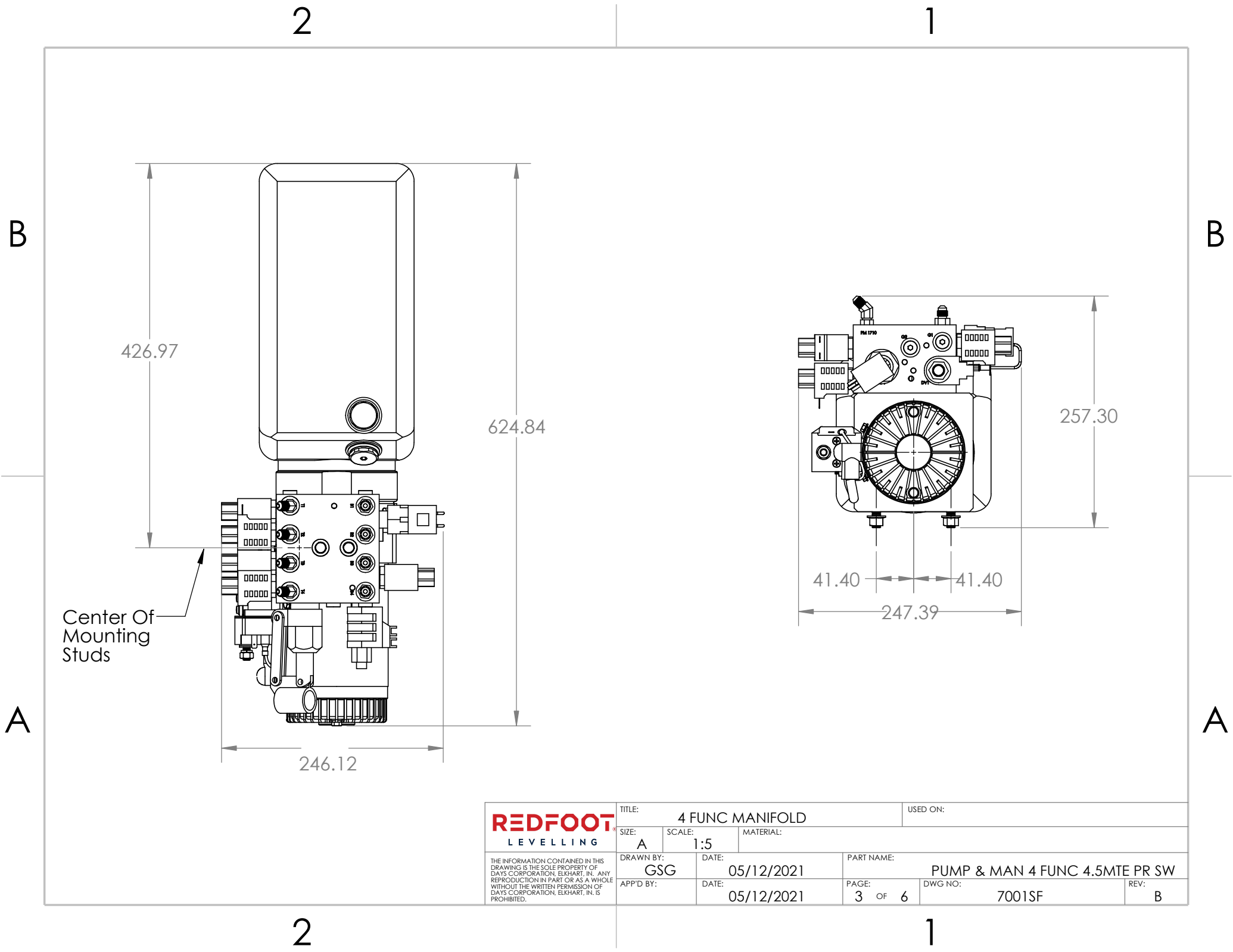
REDFOOT
LEVELLING

THE INFORMATION CONTAINED IN THIS
DRAWING IS THE SOLE PROPERTY OF
DAYS CORPORATION, ELKHART, IN. ANY
REPRODUCTION IN PART OR AS A WHOLE
WITHOUT THE WRITTEN PERMISSION OF
DAYS CORPORATION, ELKHART, IN, IS
PROHIBITED.

TITLE: 4 FUNC MANIFOLD		USED ON:	
SIZE: A	SCALE: 1:4	MATERIAL:	
DRAWN BY: GSG	DATE: 05/12/2021	PART NAME: PUMP & MAN 4 FUNC 4.5MTE PR SW	
APP'D BY:	DATE: 05/12/2021	PAGE: 1 OF 6	DWG NO: 7001SF
			REV: B



REDFOOT LEVELLING	TITLE: 4 FUNC MANIFOLD		USED ON:	
	SIZE: A	SCALE: 1:4	MATERIAL:	
THE INFORMATION CONTAINED IN THIS DRAWING IS THE SOLE PROPERTY OF DAYS CORPORATION, ELKHART, IN. ANY REPRODUCTION IN PART OR AS A WHOLE WITHOUT THE WRITTEN PERMISSION OF DAYS CORPORATION, ELKHART, IN. IS PROHIBITED.	DRAWN BY: GSG		DATE: 05/12/2021	PART NAME: PUMP & MAN 4 FUNC 4.5MTE PR SW
	APP'D BY:	DATE: 05/12/2021	PAGE: 2 OF 6	DWG NO: 7001SF
			REV: B	



2

1

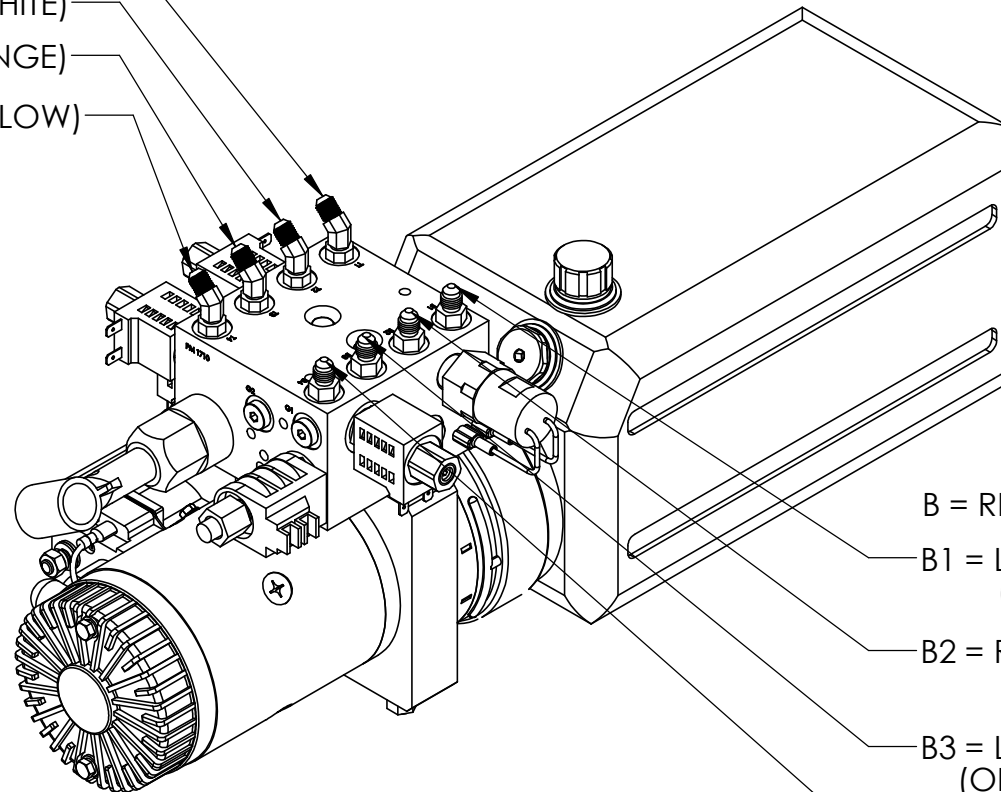
T = EXTEND FUNCTION

T1 = LEFT FRONT JACK (BROWN)

T2 = RIGHT FRONT JACK (WHITE)

T3 = LEFT REAR JACK (ORANGE)

T4 = RIGHT REAR JACK (YELLOW)



B = RETRACT FUNCTION

B1 = LEFT FRONT JACK
(BROWN/BLACK)B2 = RIGHT FRONT JACK
(WHITE/BLACK)B3 = LEFT REAR JACK
(ORANGE/BLACK)B4 = RIGHT REAR JACK
(YELLOW/BLACK)
REDFOOT
 LEVELLING

THE INFORMATION CONTAINED IN THIS
 DRAWING IS THE SOLE PROPERTY OF
 DAYS CORPORATION, ELKHART, IN. ANY
 REPRODUCTION IN PART OR AS A WHOLE
 WITHOUT THE WRITTEN PERMISSION OF
 DAYS CORPORATION, ELKHART, IN, IS
 PROHIBITED.

TITLE: 4 FUNC MANIFOLD		USED ON:	
SIZE: A	SCALE: 1:4	MATERIAL:	
DRAWN BY: GSG	DATE: 05/12/2021	PART NAME: PUMP & MAN 4 FUNC 4.5MTE PR SW	
APP'D BY:	DATE: 05/12/2021	PAGE: 4 OF 6	DWG NO: 7001SF
		REV: B	

2

1

2

1

18GA WHITE 12VDC RIGHT FRONT
JACK-16GA BLACK GROUND

18GA YELLOW 12VDC RIGHT REAR
JACK-16GA BLACK GROUND

14ga GREEN 12VDC DIRECTIONAL
VALVE- 16ga BLACK GROUND

14ga BLUE

18GA ORANGE 12VDC LEFT REAR
JACK-16GA BLACK GROUND

12VDC+ FROM BATTERY

14ga BLUE 12VDC RETRACT
VALVE- 16ga BLACK GROUND

18GA BROWN 12VDC LEFT FRONT
JACK-16GA BLACK GROUND

REDFOOT
LEVELLING

THE INFORMATION CONTAINED IN THIS
DRAWING IS THE SOLE PROPERTY OF
DAYS CORPORATION, ELKHART, IN. ANY
REPRODUCTION IN PART OR AS A WHOLE
WITHOUT THE WRITTEN PERMISSION OF
DAYS CORPORATION, ELKHART, IN, IS
PROHIBITED.

TITLE: 4 FUNC MANIFOLD

USED ON:

SIZE:
A

SCALE:
1:4

MATERIAL:

DRAWN BY:
GSG

DATE:
05/12/2021

PART NAME:

PUMP & MAN 4 FUNC 4.5MTE PR SW

APP'D BY:

DATE:
05/12/2021

PAGE:

5 OF 6

DWG NO:

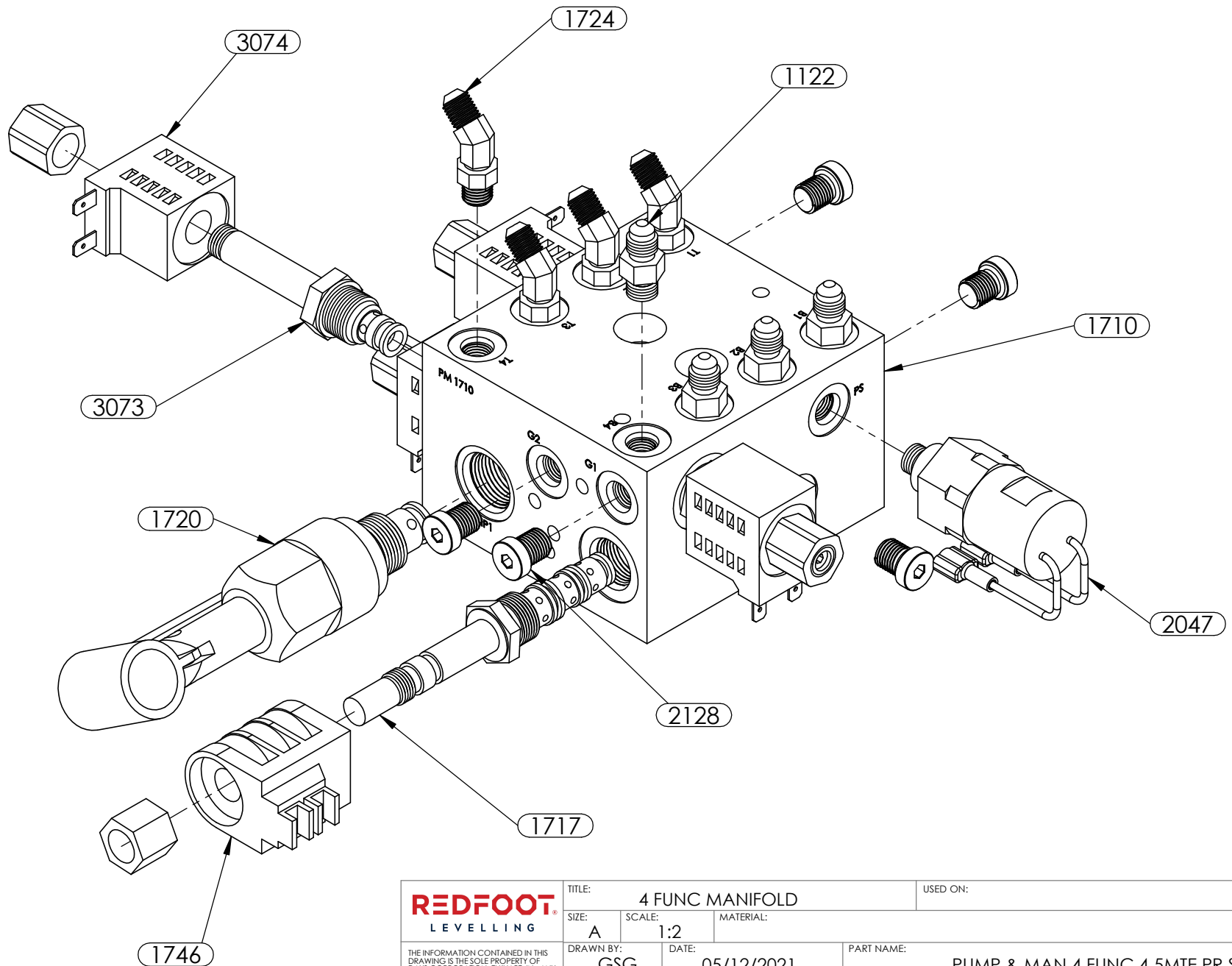
7001SF

REV:

B

2

1



REDFOOT® LEVELLING	TITLE: 4 FUNC MANIFOLD		USED ON:	
	SIZE: A	SCALE: 1:2		
THE INFORMATION CONTAINED IN THIS DRAWING IS THE SOLE PROPERTY OF DAYS CORPORATION, ELKHART, IN. ANY REPRODUCTION IN PART OR AS A WHOLE WITHOUT THE WRITTEN PERMISSION OF DAYS CORPORATION, ELKHART, IN. IS PROHIBITED.	DRAWN BY: GSG	DATE: 05/12/2021	PART NAME: PUMP & MAN 4 FUNC 4.5MTE PR SW	
	APP'D BY:	DATE: 05/12/2021	PAGE: 6 OF 6	DWG NO: 7001SF
				REV: B