

REDFOOT®

LEVELLING



INSTALLATION MANUAL FOR ADAPTER
DUCATO X290

EURO 6 with CAB Chassis

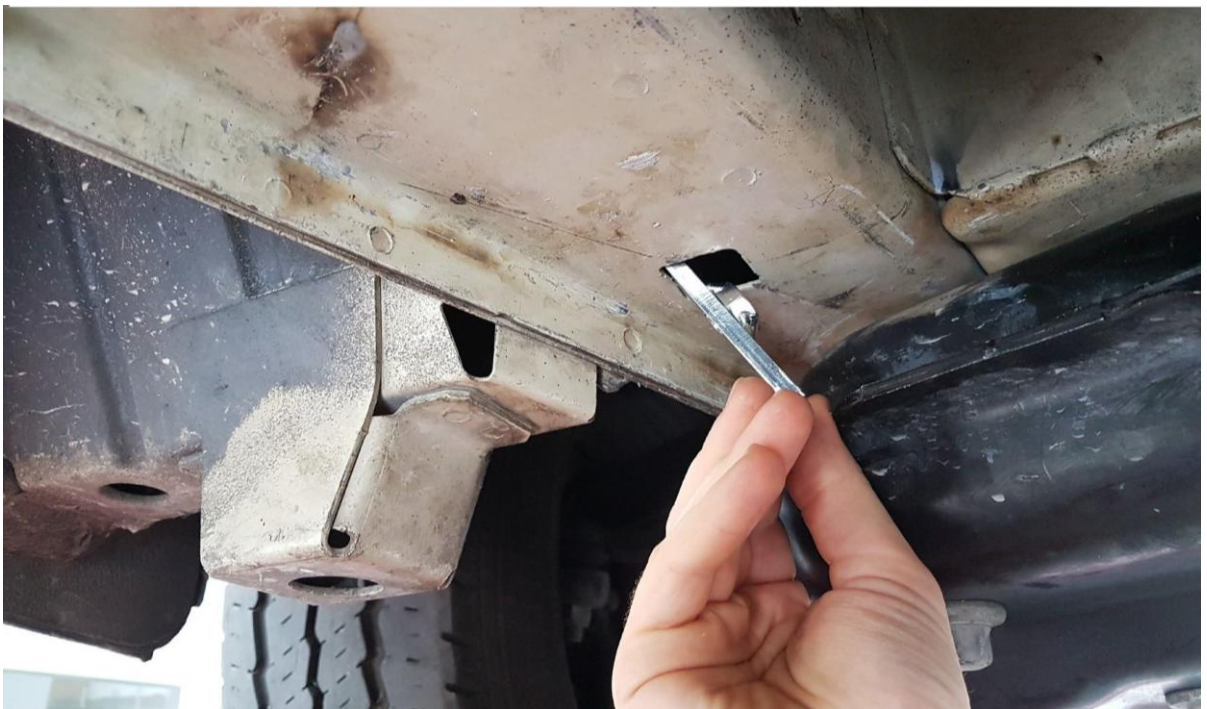
Updated: October 2024

Front adapter Ducato X290

1. Remove the rubber stopper.



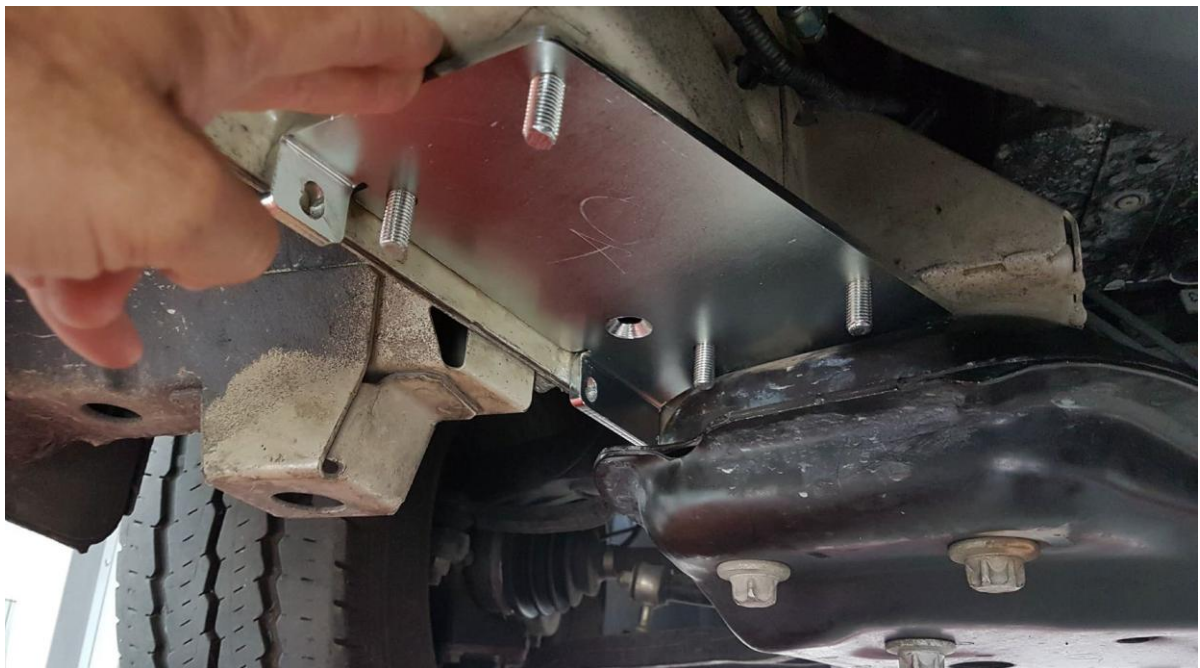
2. Insert the plate into the square hole.



3. Plate inserted correctly.



4. Push the adapter up against the front subframe.



5. Fix the adapter to the special plate that you insert into the hole.



6. Drill two 8mm holes at the points indicated.



7. Fix with the two M8 bolts supplied in your kit.



8. If jack is in contact with the fuel tank, please refer to page 9 of this manual.



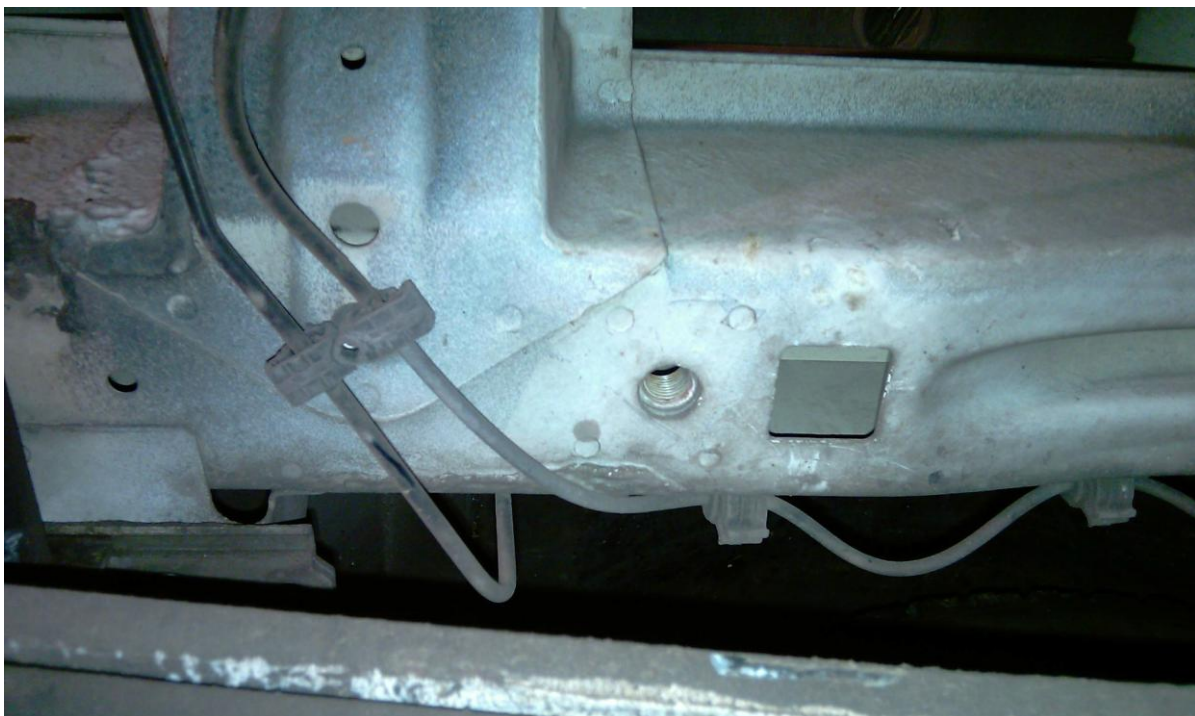
The above image shows the jack with the motor to the inside of the vehicle and rotated to the rear.

(Optional) Fitting the rear bracket in front of the rear axle (if necessary)

Rear adapter Ducato x250 (front the rear axle)

Step 1:

If the rear adapter must be placed before the rear axle, do so at the point shown in the photos.



Rear adapter Ducato x250 (front the rear axle)

Step 2: Insert and position the nut plate (plate with **ONE HOLE**) then fix with the bolts (10x70 and 14x70).



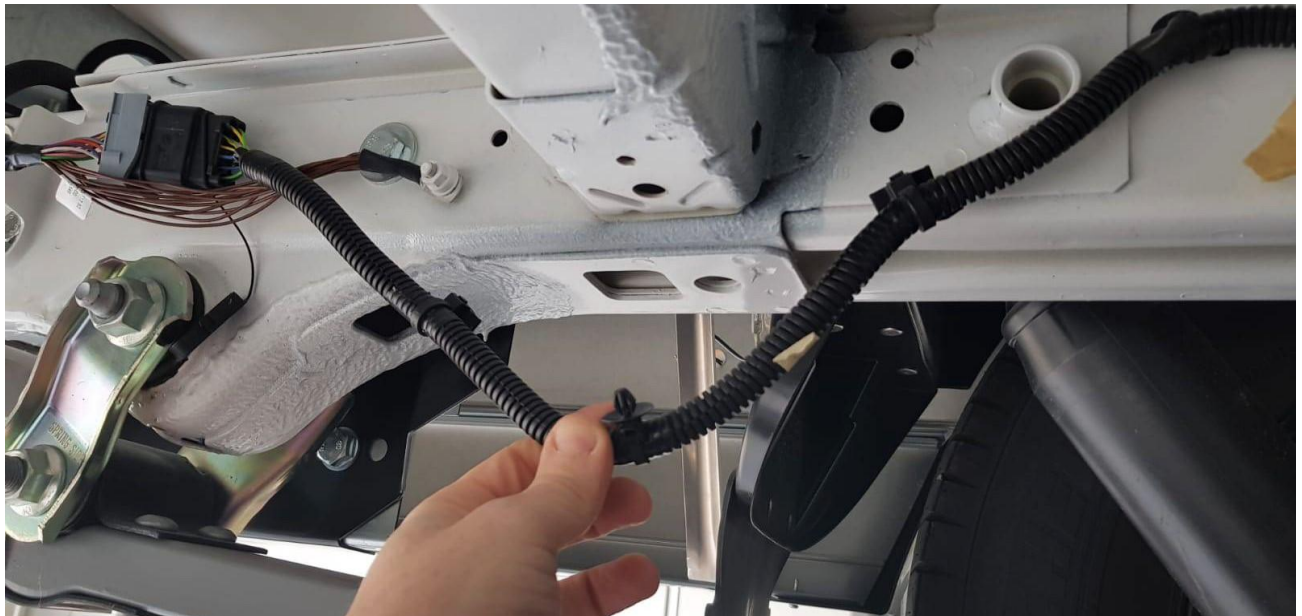
MOUNT BOTH REAR JACKS WITH MOTOR TO THE INSIDE OF THE VEHICLE AND ROTATION TO THE FRONT

(Ideal) Rear adapter Ducato x250 behind the rear axle

Step 1:

Ideally the rear adapter is placed behind the rear axle at the point show in the photo, insert the nut plates (with **TWO HOLES**) and pay attention to the electrical wiring, move and insert the adapter (see the photos).



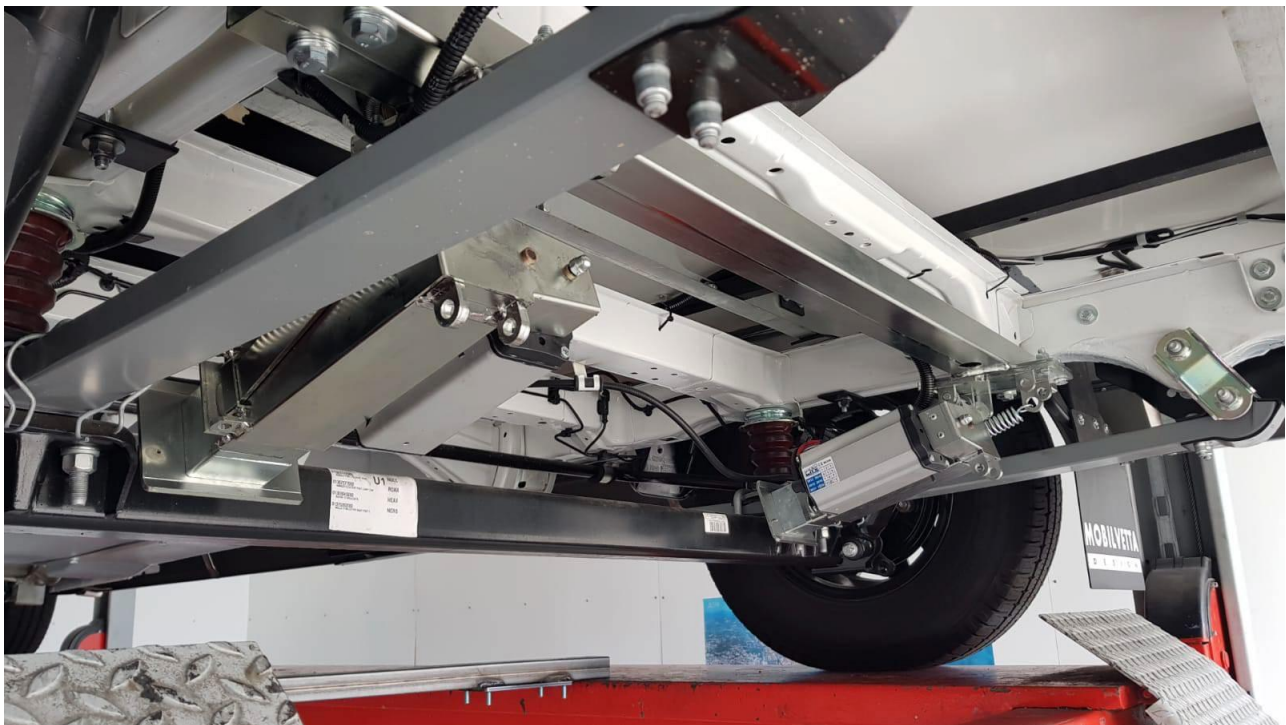
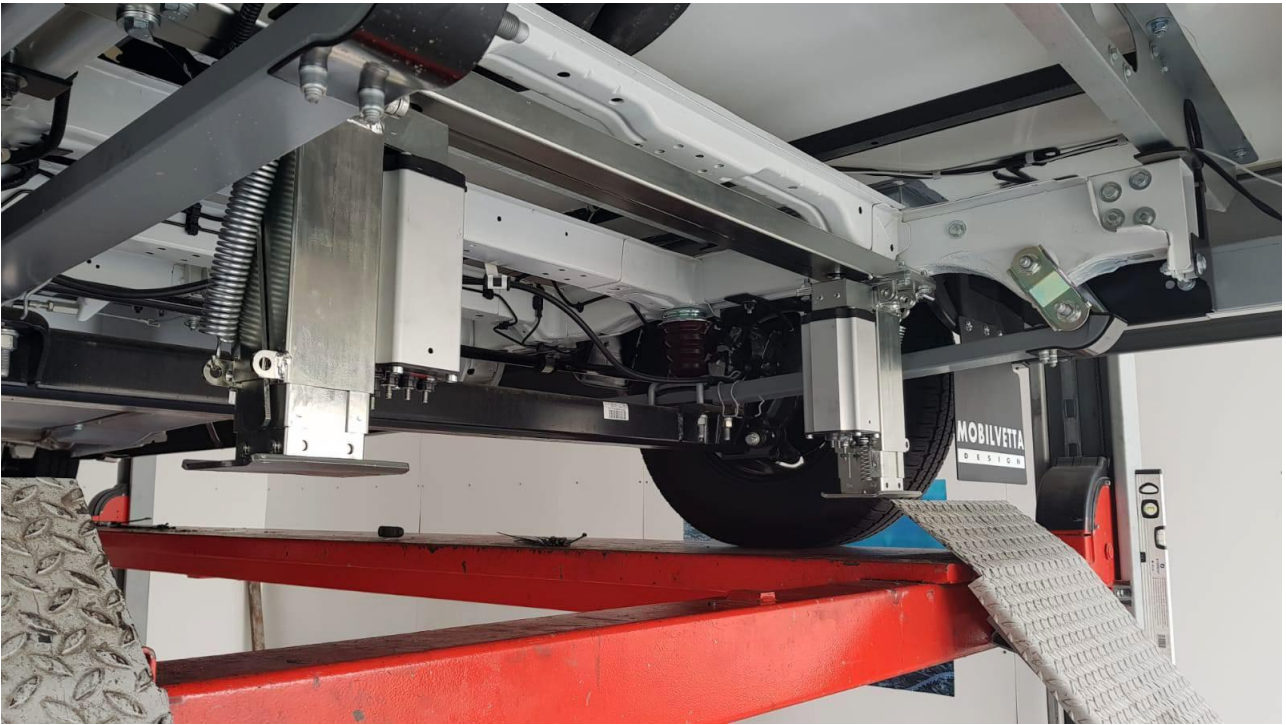


(remove the electrical wiring, insert the adapter up it)



Step 2:

Fix the adapter using the bolts supplied (4pc – 10x70), then fix the jacks.

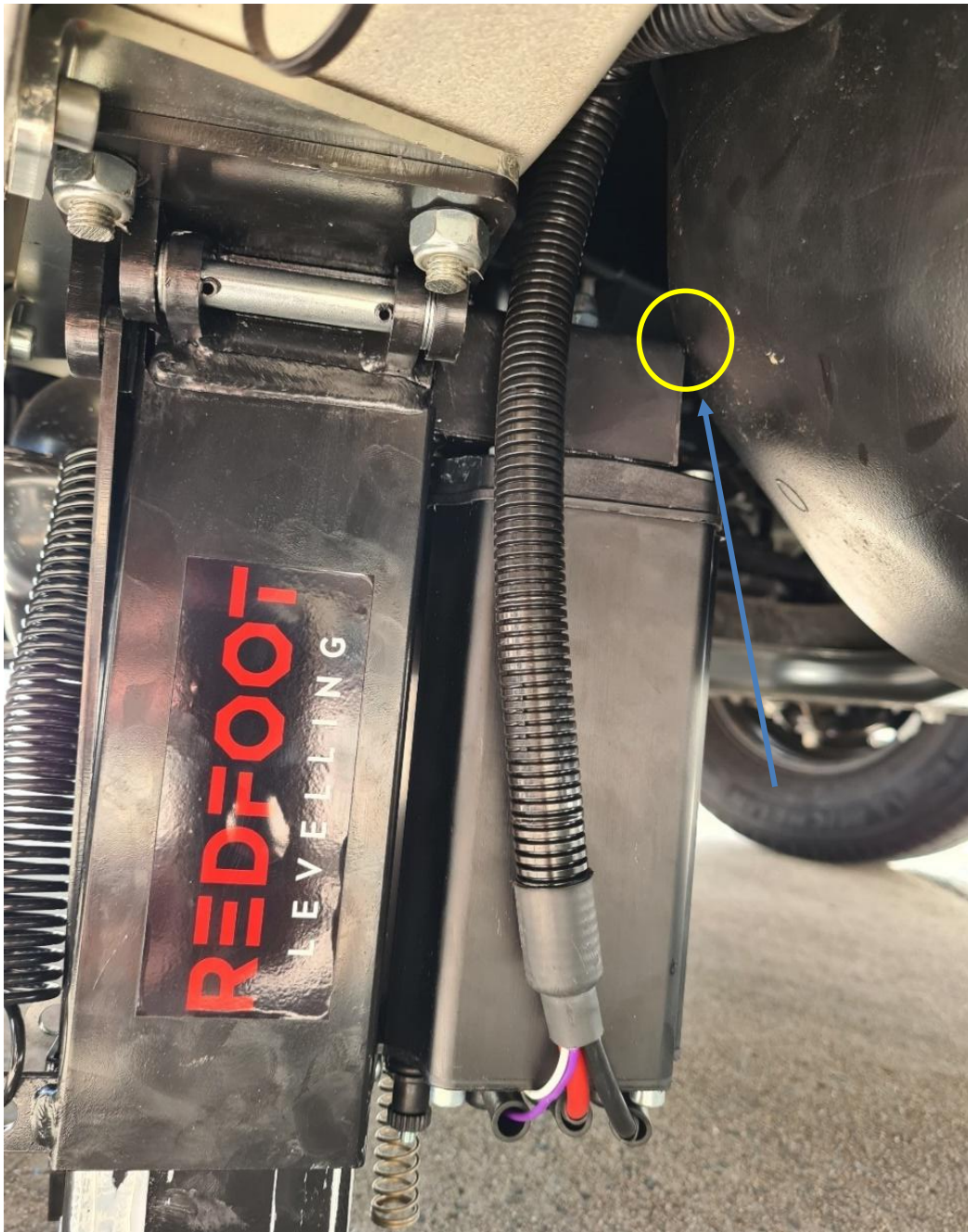


MOUNT BOTH REAR JACKS WITH MOTOR TO THE INSIDE OF THE VEHICLE AND ROTATION IN FRONT OR REAR

Optional – Front Passenger Jack Fuel Tank Obstruction (Strap Modification)

If the front passenger side jack is in contact with the fuel tank. It is recommended to relocate the fuel tank approximately 25-30mm towards the driver's side.

Doing this will allow the jack to swing freely and not touch the tank during operation. It is recommended to modify the tank straps to improve clearance.



To relocate the tank towards the driver's side, drill two new holes in the existing tank straps.



Passenger Side Strap

Important: Firstly, loosen both straps. Only remove one strap at a time as you want the weight of the fuel tank to be always held in by a strap.

On the side of the strap that is closer to the passenger side of the vehicle, drill a new hole approximately 25-30mm from the center of the original hole towards the driver's side of the vehicle.

There are two ends to each strap that will need this modification, the front tank attachment and the rear tank attachment. Remove any excess tabs with a grinder as shown in the pictures below.



Drivers Side Strap

Repeat the previous steps for the driver's side strap. This will now allow the tank to be moved slightly to the driver's side of the vehicle.



Remounting the straps

To remount the straps, use the same mounting hole in the chassis but the new holes in the bracket strap. This will now position the fuel tank in its new location. Some lateral force may be required to assist, tighten each bolt.



(optional) Rounding of the passenger side front left hole to 12mm.

Rounding the hole closest to the front passenger corner of the jack to 12mm will make it easier to mount to the front passenger side jack to the bracket if you are having issues. See the image below.

