

REDFOOT[®]

LEVELLING



INSTALLATION MANUAL FOR ADAPTER
DUCATO X290

EURO 6 with rear ALKO

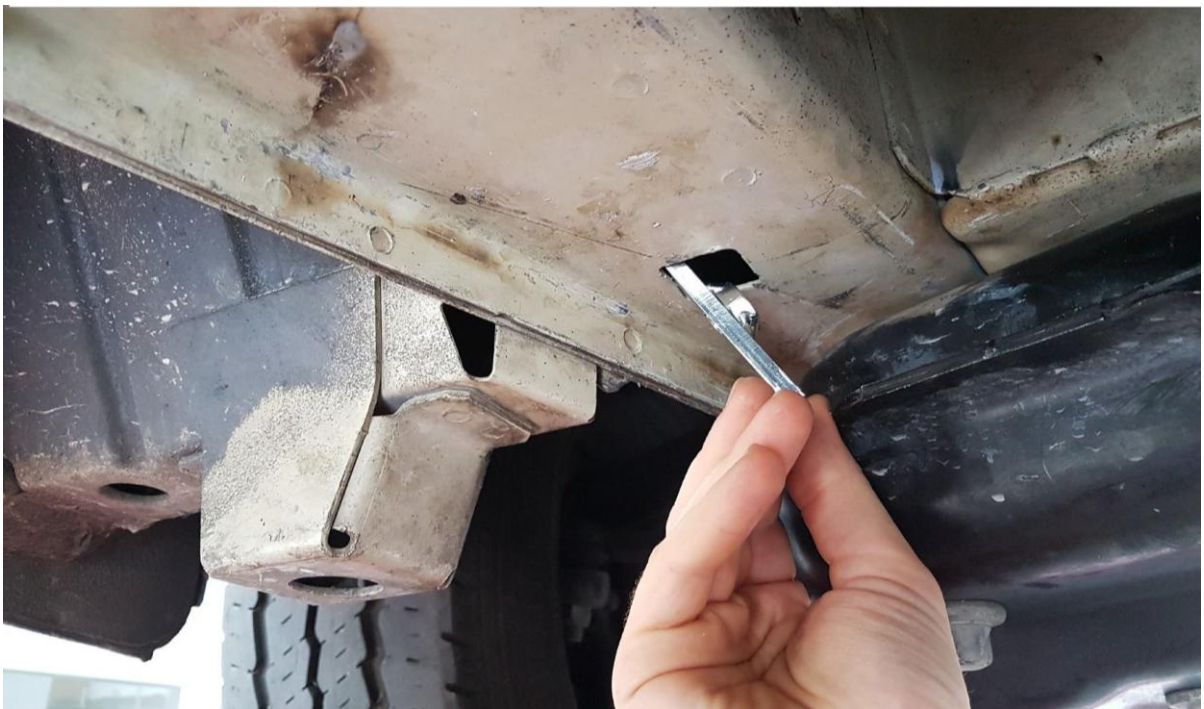
Updated: July 2025

Front adapter Ducato X290

1. Remove the rubber stopper.



2. Insert the plate into the square hole.



3. Plate inserted correctly.



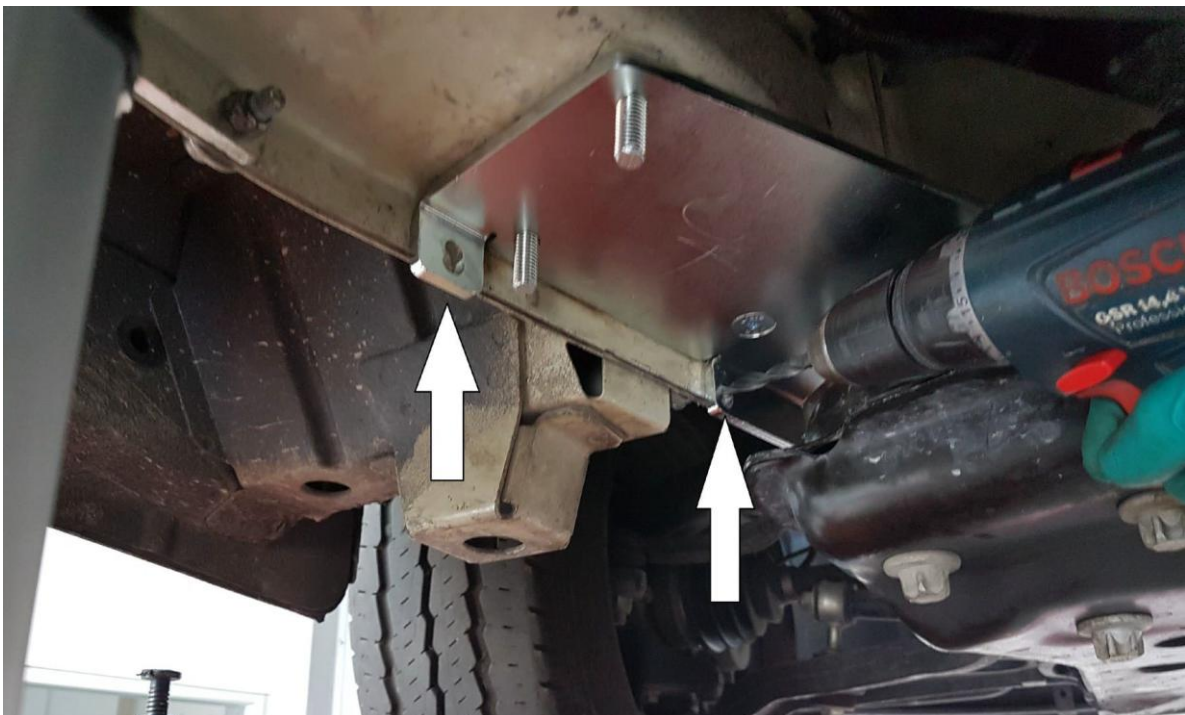
4. Push the adapter up against the front subframe.



5. Fix the adapter to the special plate that you insert into the hole.



6. Drill two 8mm holes at the points indicated.



7. Fix with the two M8 bolts supplied in your kit.



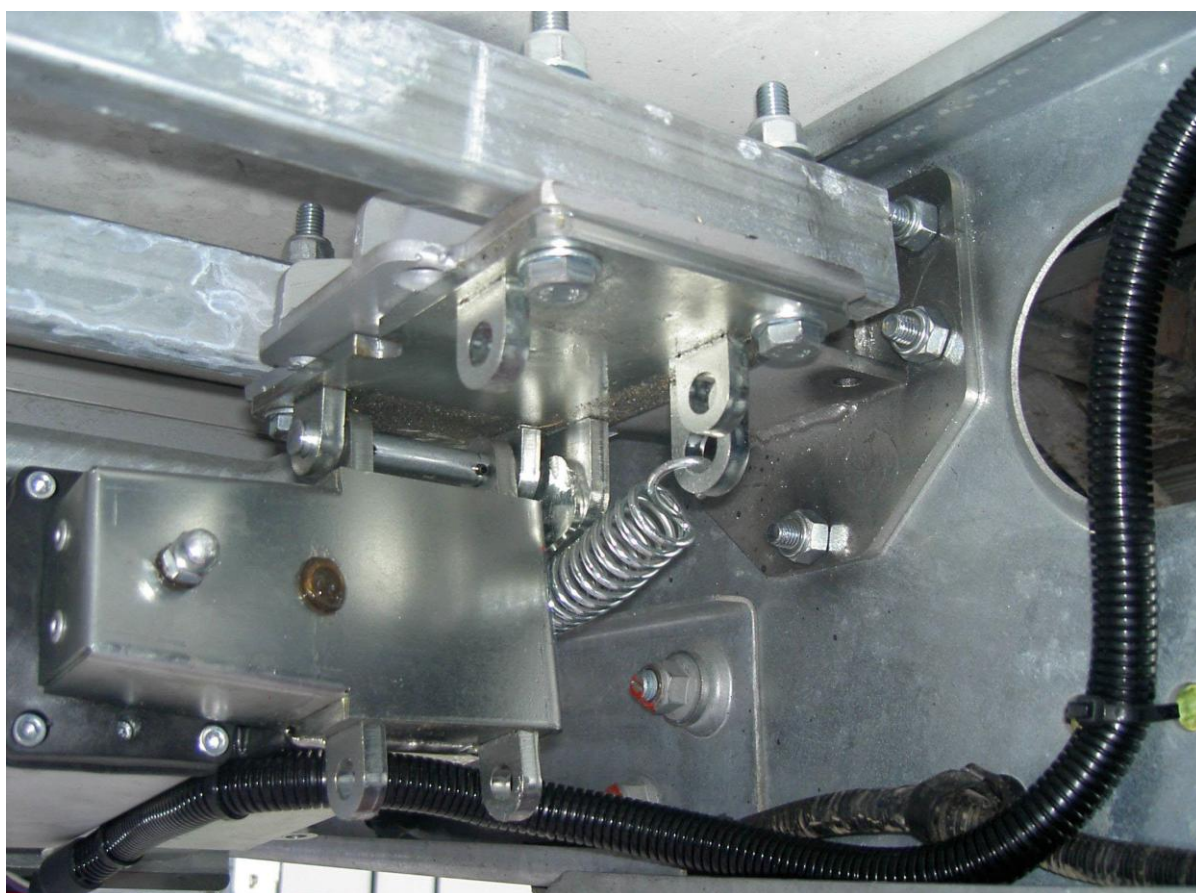
8. If jack is in contact with the fuel tank, please refer to page 9 of this manual.



The above image shows the jack with the motor to the inside of the vehicle and rotated to the rear.

Rear adapter Alko left/right

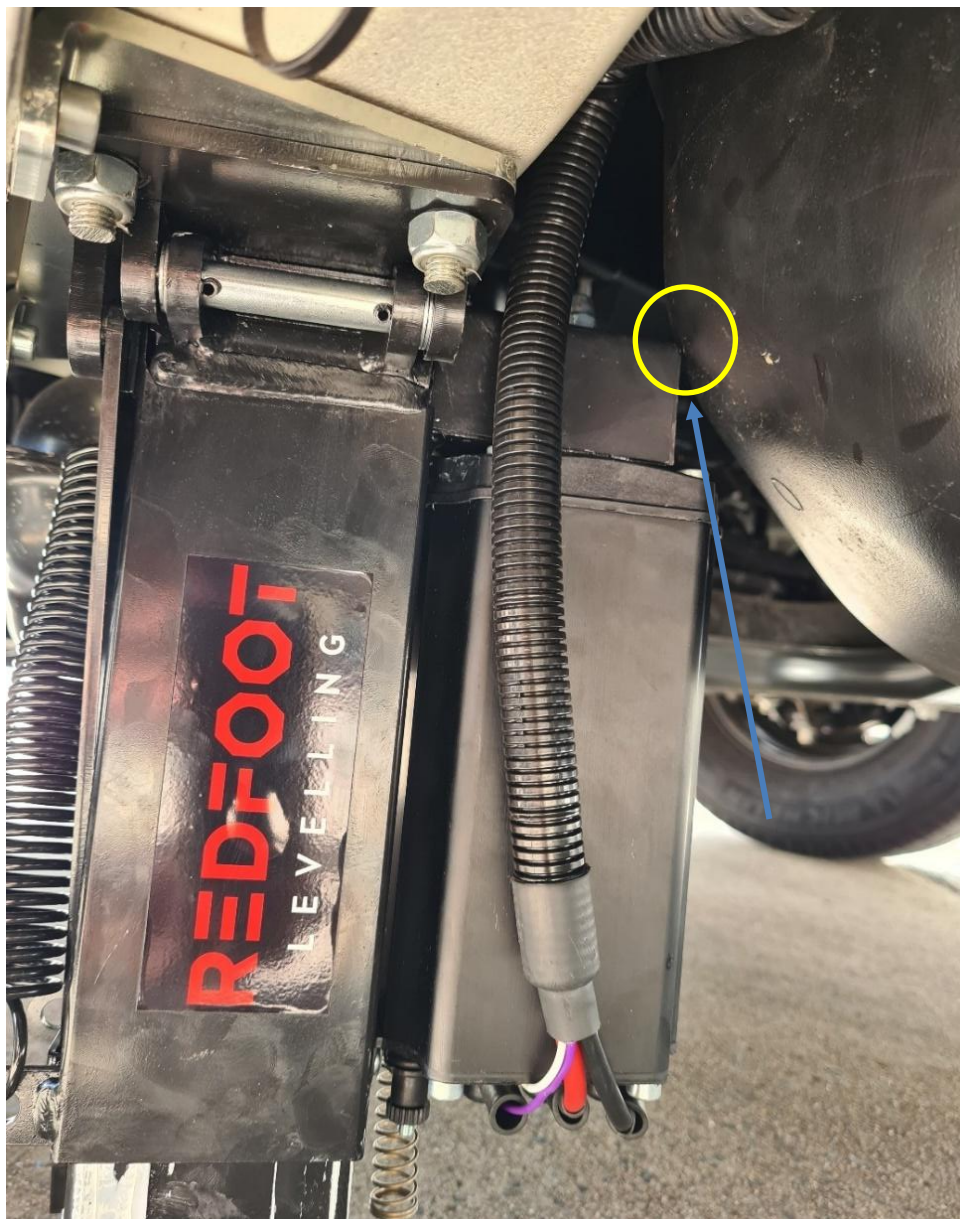
1. Fix the adapter at a minimum of 34cm from the floor using the supplied 10x30mm bolts.
The adapters must be positioned and fixed perpendicular to the chassis.
2. Position the link bars over the adapter, mark and drill 10mm holes that align with the adapter.
3. Fit the jack with the supplied 10x70mm bolts. The bolts will connect the adapter, the link bar and the jack together. The jacks can rotate front or rear.
4. Adjust the limit switches (see installation manual).





Optional – Front Passenger Jack Fuel Tank Obstruction (Strap Modification)

If the front passenger side jack is in contact with the fuel tank. It recommended to relocate the fuel tank approximately 25-30mm towards the driver's side. Doing this will allow the jack to swing freely and not touch the tank during operation. It is recommended to modify the tank straps to improve clearance.



To relocate the tank towards the driver's side, drill two new holes in the existing tank straps.

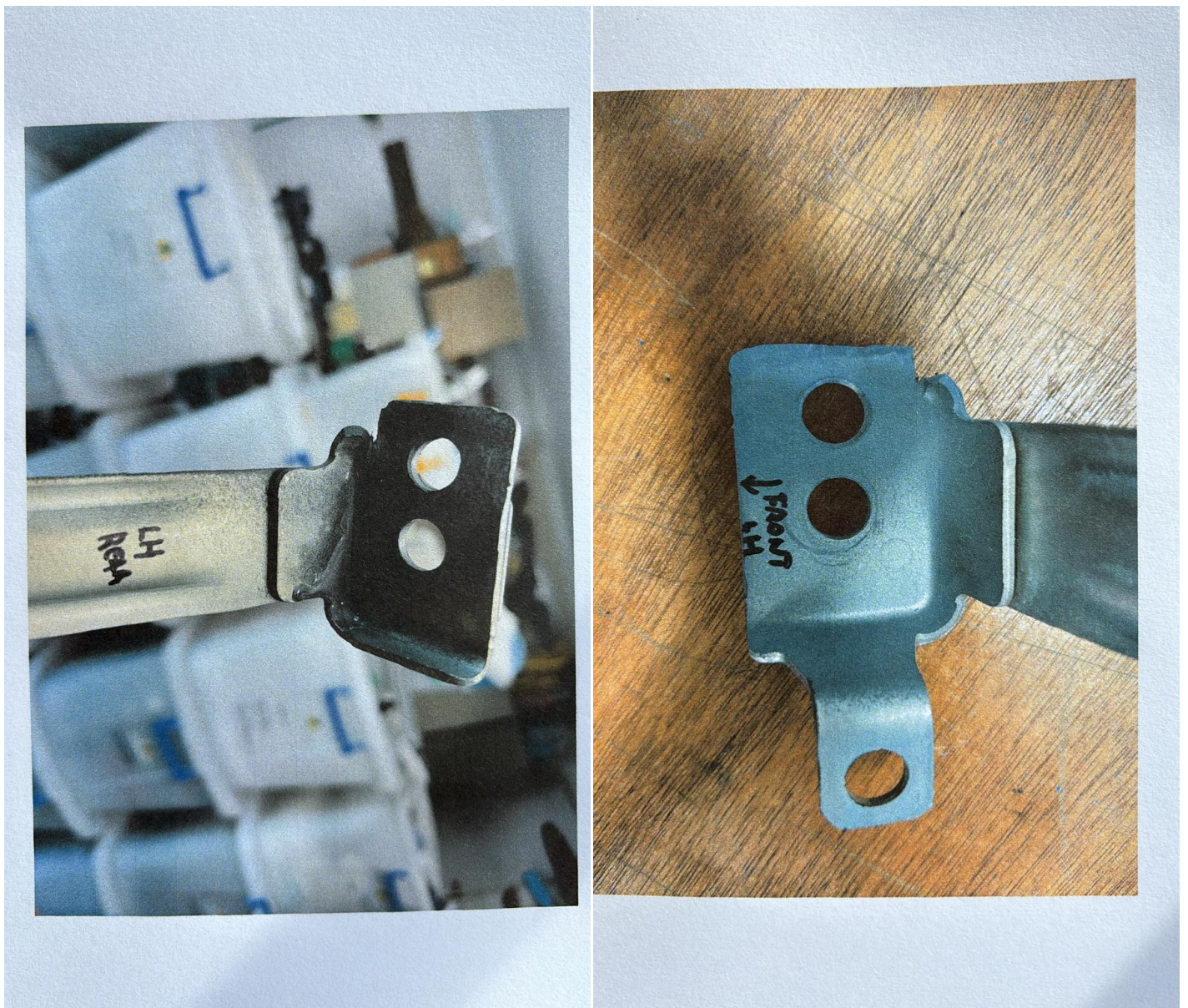


Passenger Side Strap

Important: Firstly, loosen both straps. Only remove one strap at a time as you want the weight of the fuel tank to be always held in by a strap.

On the side of the strap that is closer to the passenger side of the vehicle, drill a new hole approximately 25-30mm from the center of the original hole towards the driver's side of the vehicle.

There are two ends to each strap that will need this modification, the front tank attachment and the rear tank attachment. Remove any excess tabs with a grinder as shown in the pictures below.



Drivers Side Strap

Repeat the previous steps for the driver's side strap. This will now allow the tank to be moved slightly to the driver's side of the vehicle.



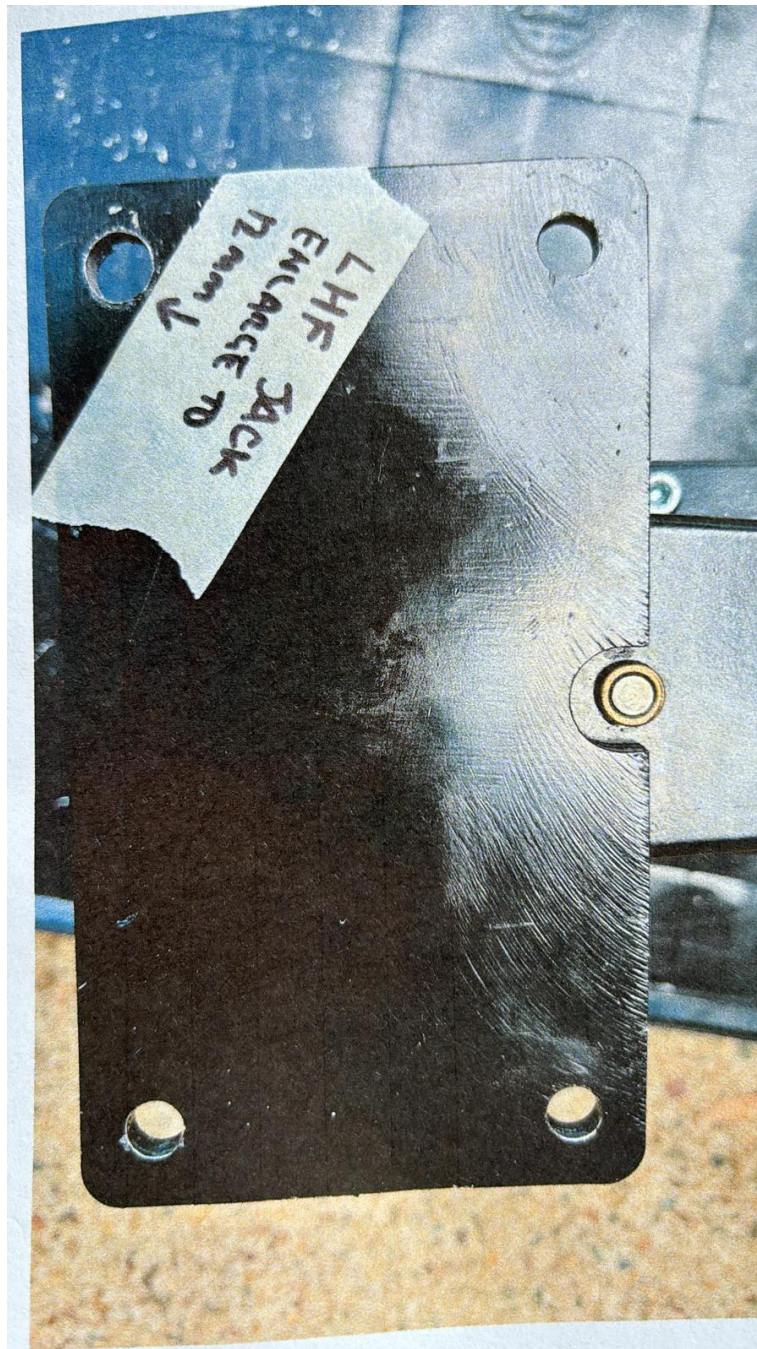
Remounting the straps

To remount the straps, use the same mounting hole in the chassis but the new holes in the bracket strap. This will now position the fuel tank in its new location. Some lateral force may be required to assist, tighten each bolt.



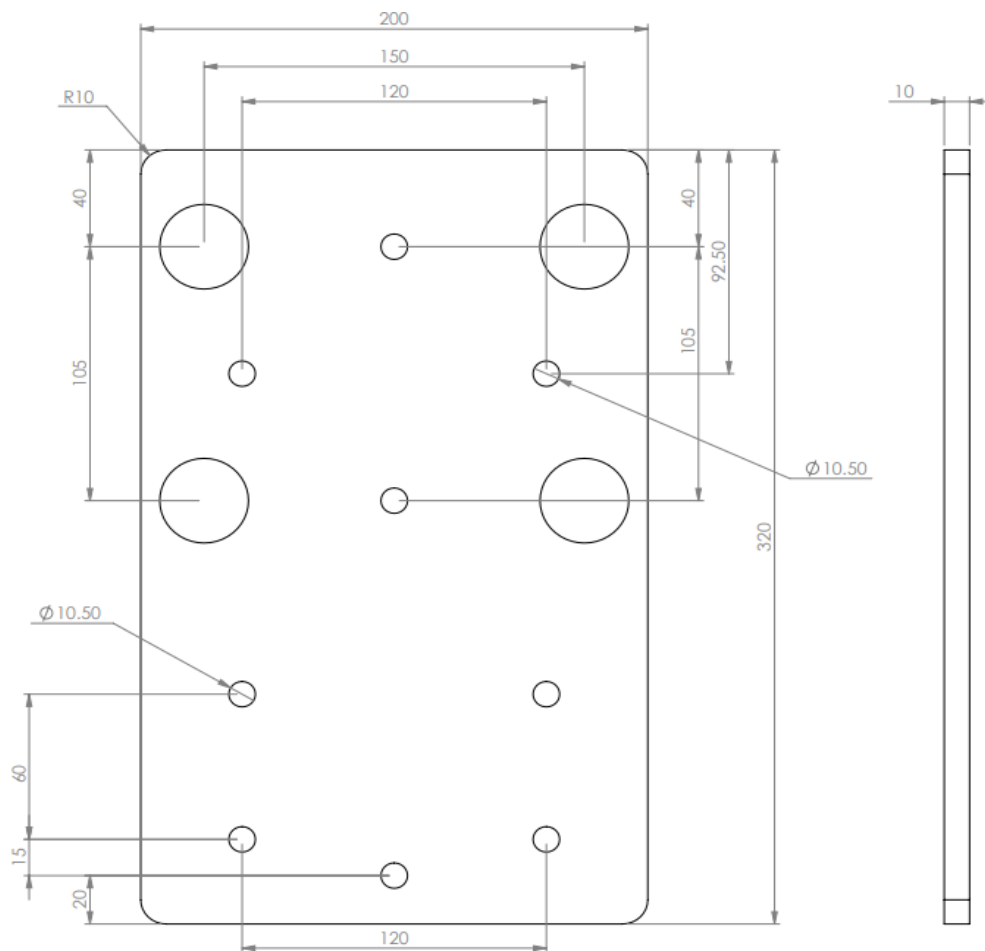
Rounding of the passenger side front left hole to 12mm.

Rounding the hole closest to the front passenger corner of the jack to 12mm will make it easier to mount to the front passenger side jack to the bracket. See the image below.



Optional Rear Mounting Plate for Alko (HIGH) Chassis

Part No. TI-0531-P-0021



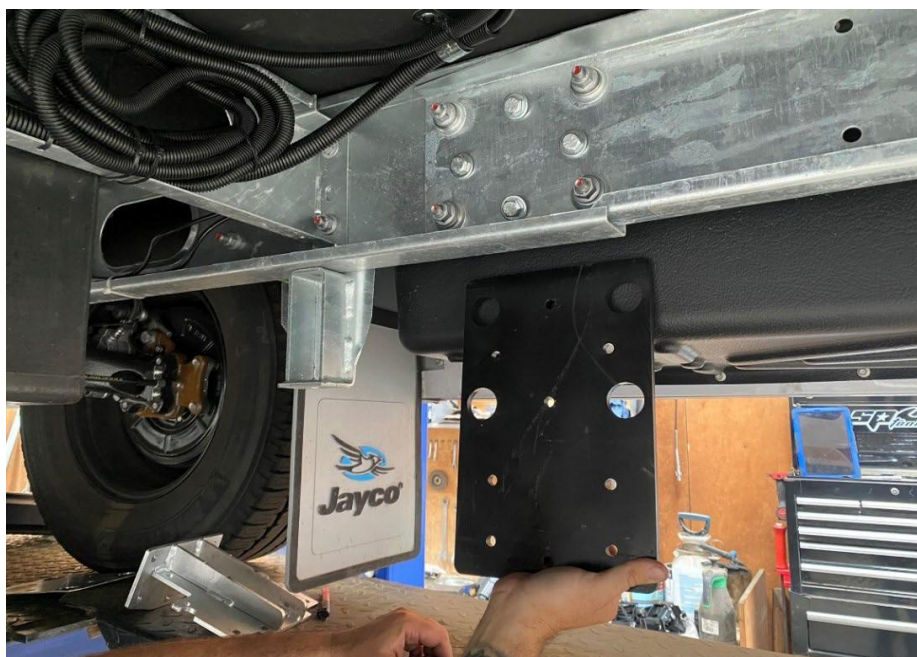
9.



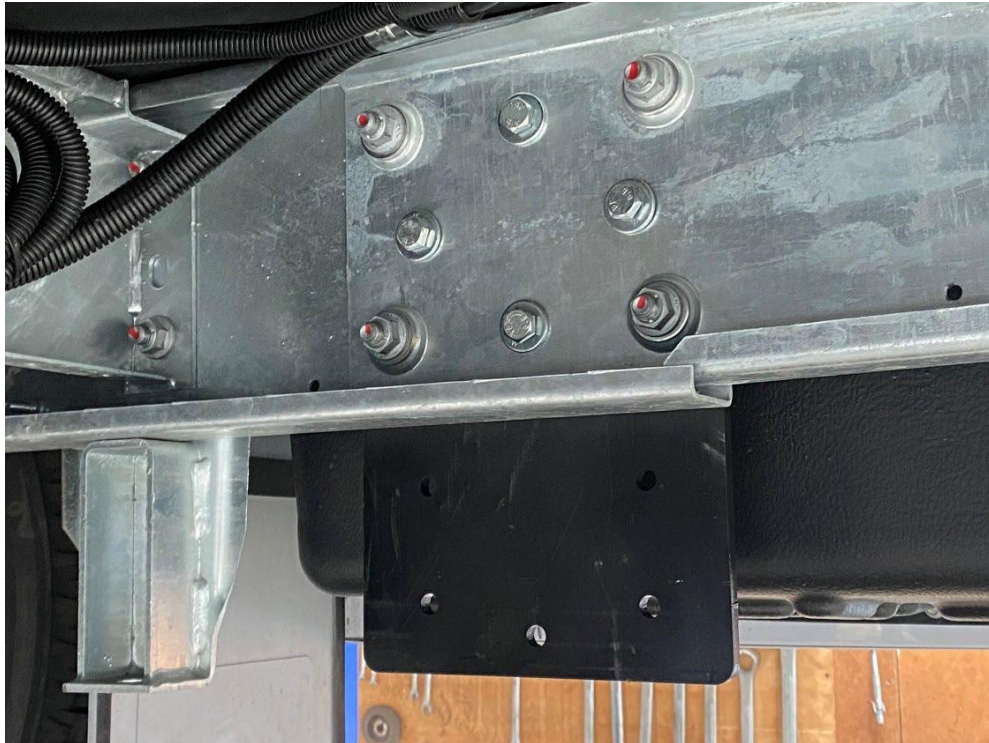
Using the mount plate as a template, mark and drill four 10.5mm holes at the chassis extension point as shown. The mounting plate is designed to mount over the outside of the chassis four extension bolts.



Use the bolts/nuts/washers provided to mount to the outside of chassis.



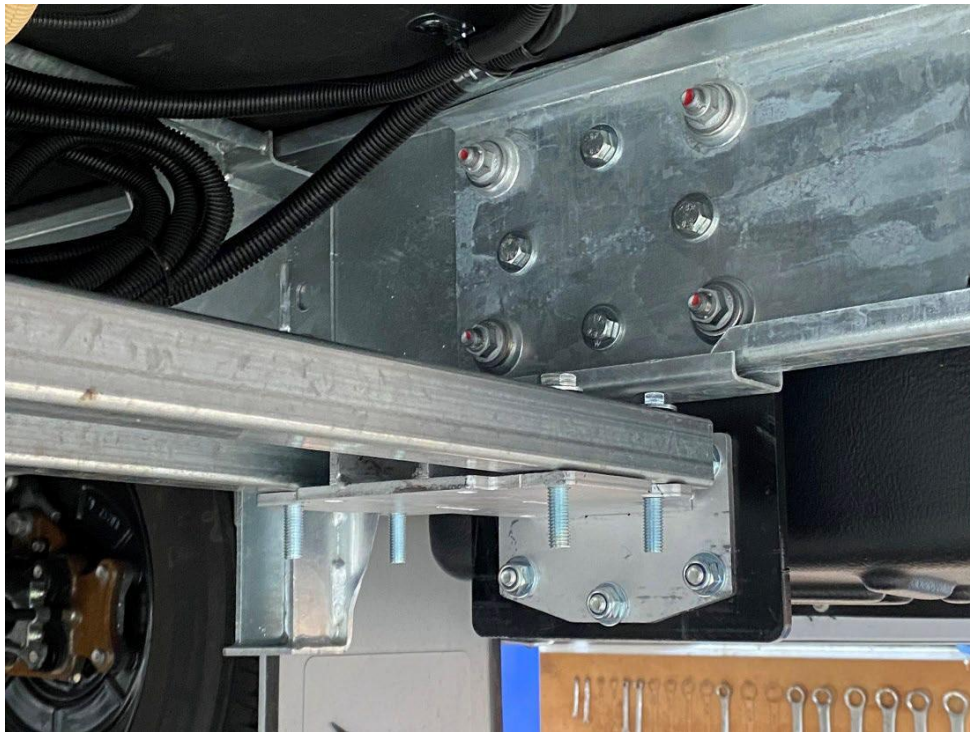
Once in position, tighten bolts and nyloc nuts to 50 nm.



Install the jack bracing bracket by using the five 10mm bolts/nuts supplied as shown below.



Install the two cross braces supplied on the top of the jack bracing bracket as shown using the four longer 10mm bolts.



Install the jack leg into position as shown and tighten the bolts/nuts. Ensure washers are also used.

