

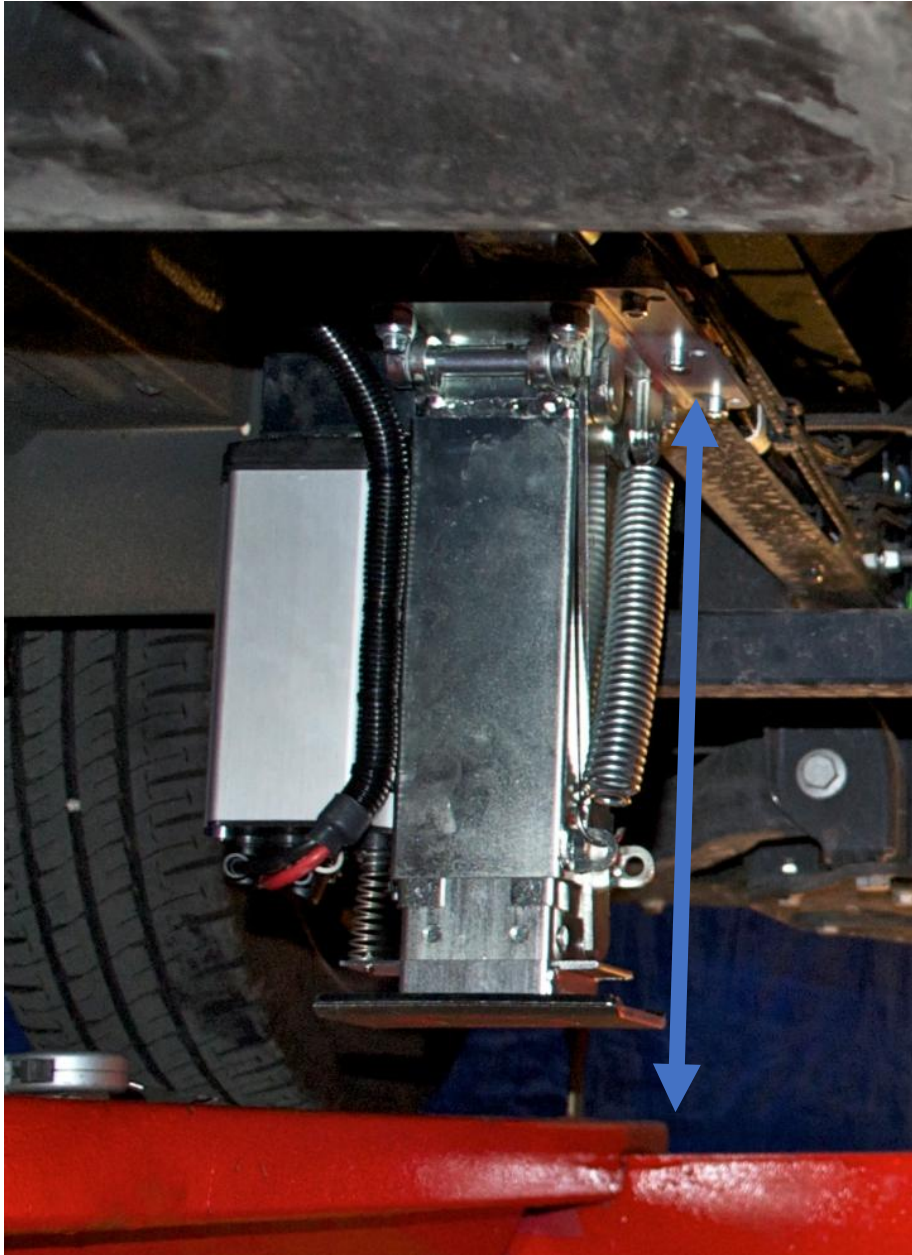
REDFOOT

LEVELLING

Iveco Daily Chassis Bracket Installation

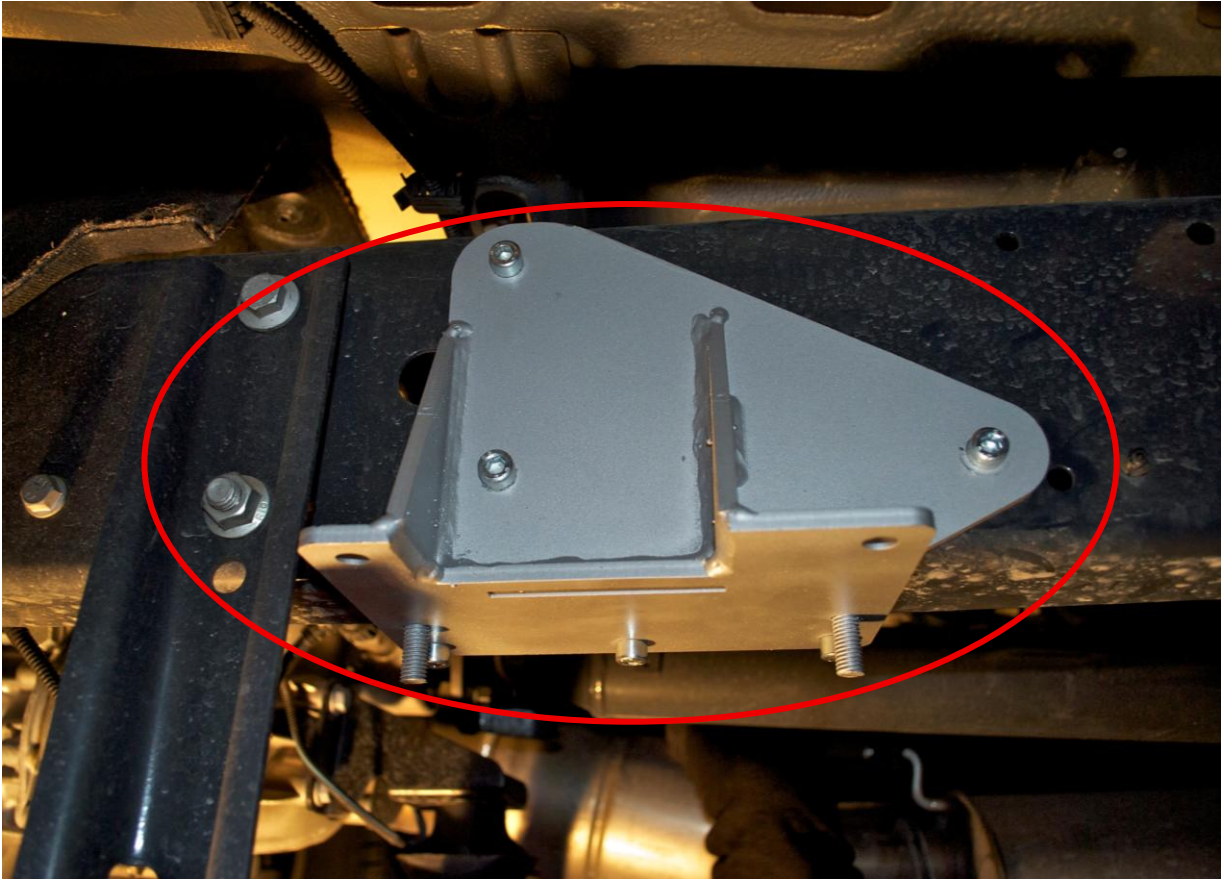


Front Chassis to ground heights

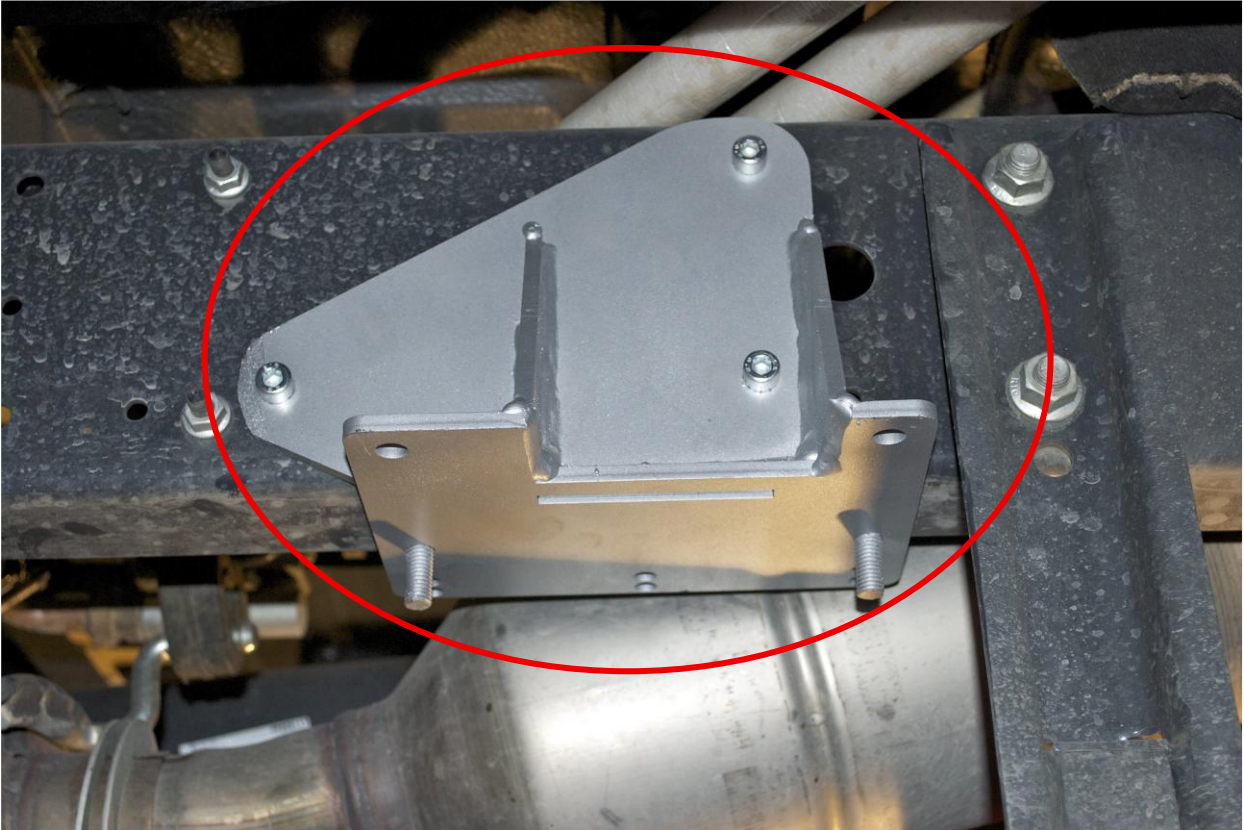


There needs to be a minimum from bottom of chassis to ground clearance of 430mm, otherwise front the suspension will need to be adjusted to reach this height.

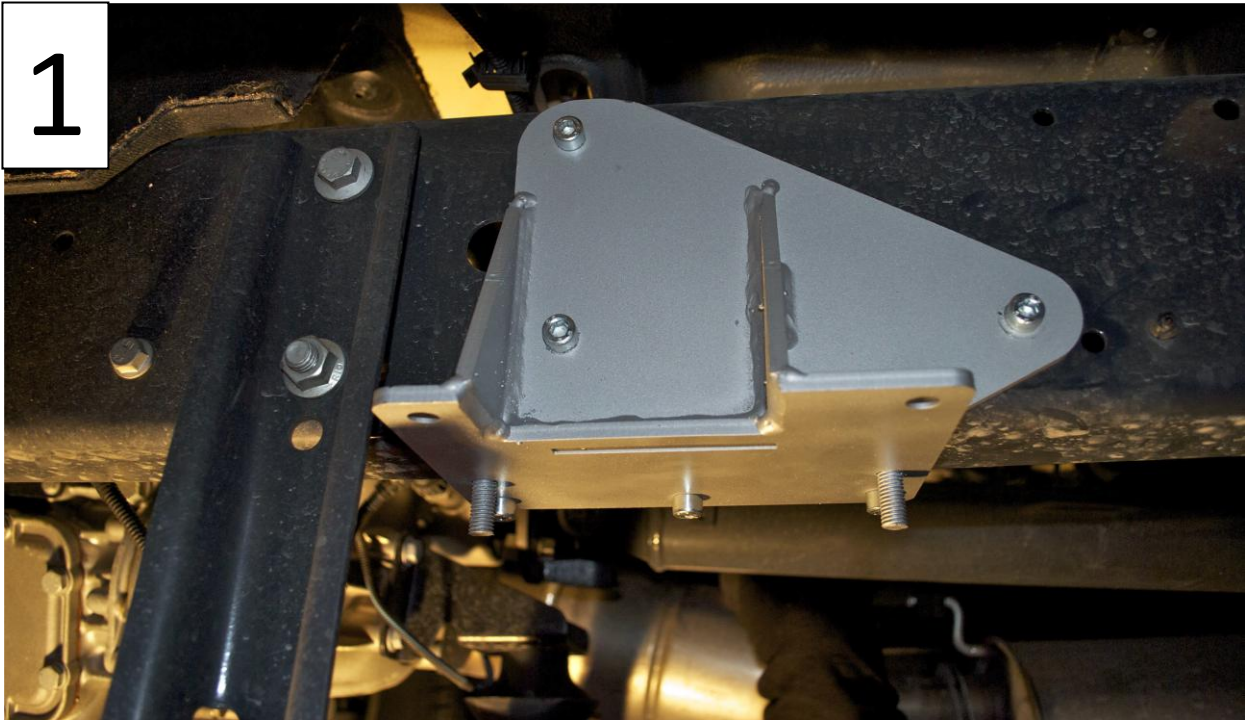
Front Passenger side location



Front Driver side location

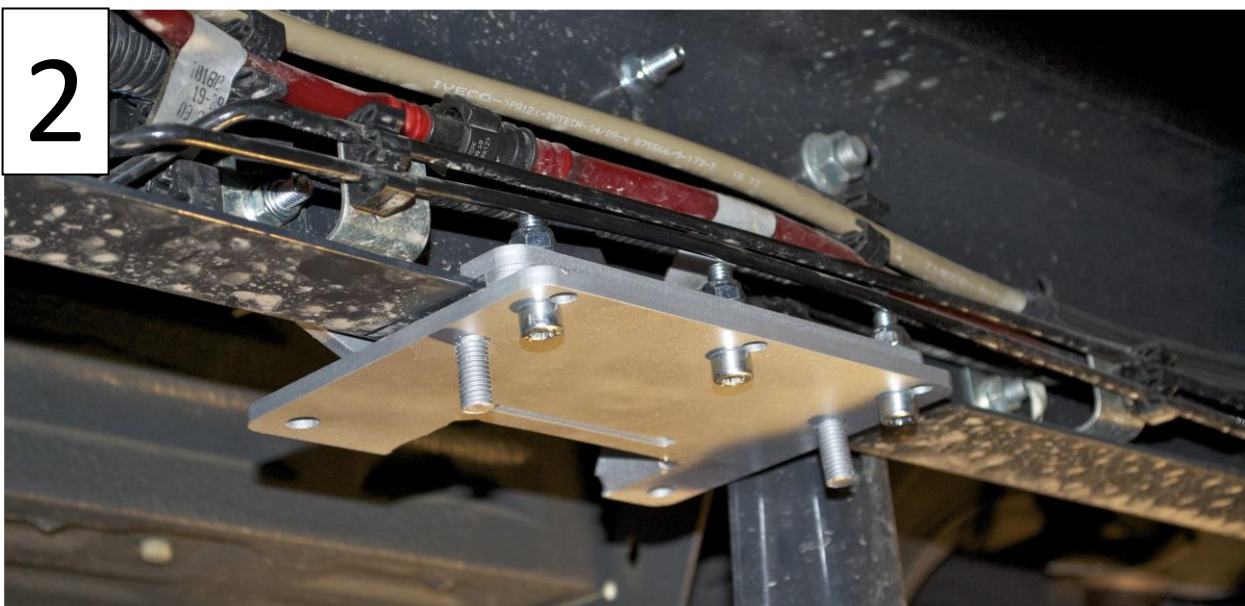


Front Mounting Guide

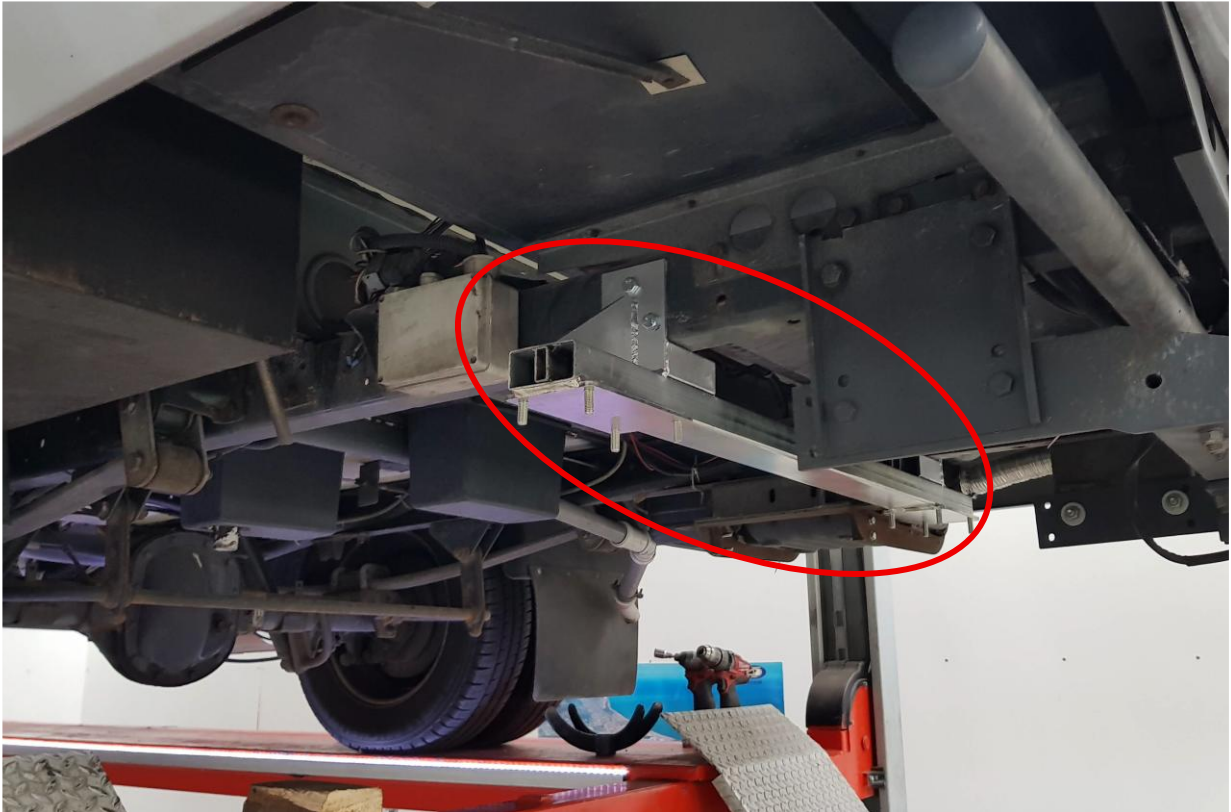


Step 1: The adapter must be placed just behind the gearbox cradle and is fixed using the three M8 screws supplied, the new models will line up without drilling any holes otherwise mark and drill 3 holes.

Step 2: Mount and fasten the clamp on the inside of the frame.
Repeat this for both front brackets.



Rear bracket location



Rear Mounting Guide



Step 3: Put the rear bracket behind the rear axle on the main chassis, make sure the bracket is pushing all the way up against the chassis before marking out the holes. On some chassis it is possible to use pre-existing holes if not drill 3 10.5mm holes on each side.

Fix with the M10 bolts and nuts supplied.

Ready to mount Jacks



- For further information contact:
Redfoot Levelling Pty Ltd
Unit 1, 7 Abeles Street
Baringa QLD 4551
Ph 07 5228 0211
www.redfootlevelling.com.au

REDFOOT
LEVELLING