



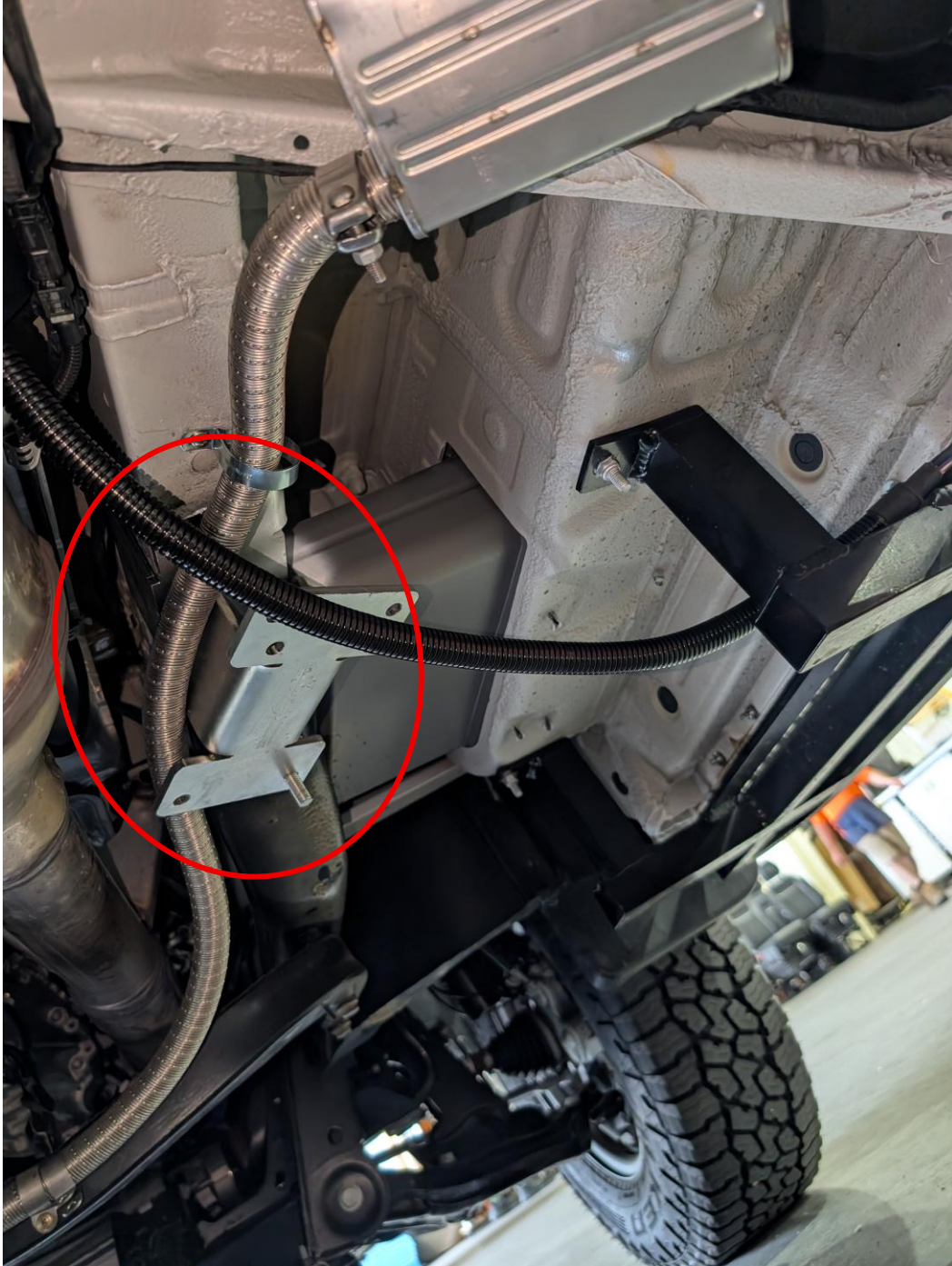
Mercedes Sprinter 516 - 519 Chassis Bracket Installation



Front Passenger side location



Front Driver side location



Front Mounting Guide

1



Step 1 - 2: Insert the nut plate in the hole present on the frame behind the front subframe.

2

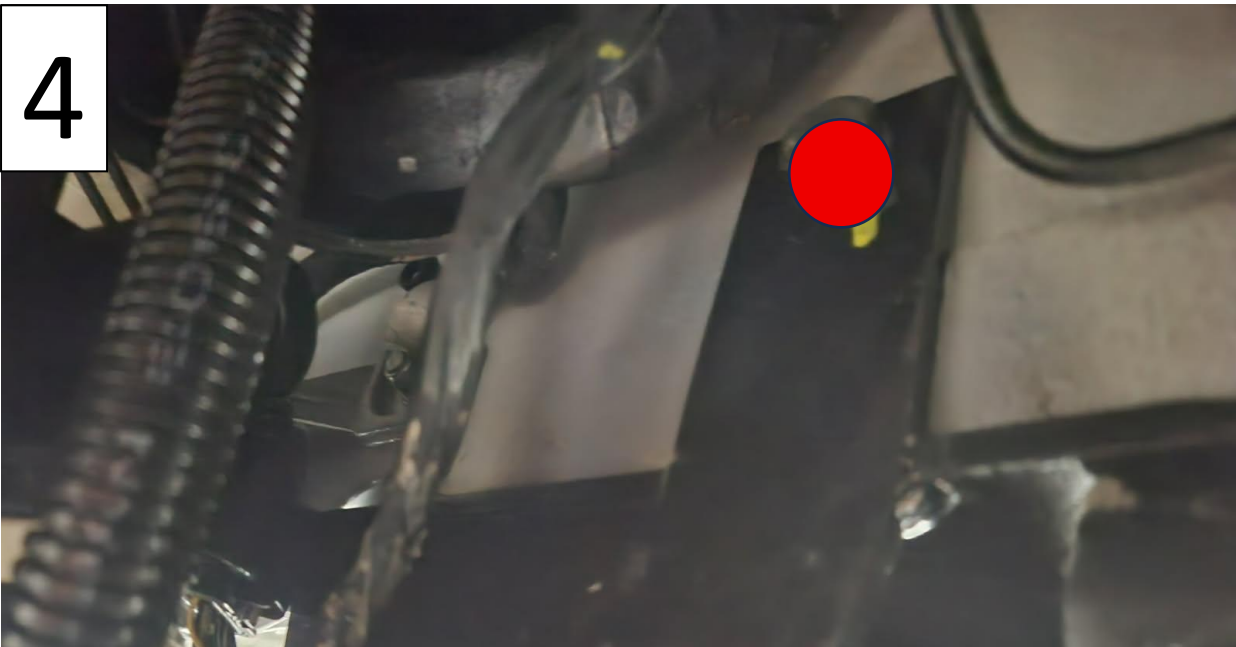


3



Step 3 – 4: Push the bracket firmly around the subframe mount then mark out and drill an 11mm hole into the chassis for the brackets top bolt.
There is a left side and a right side bracket make sure to identify before drilling holes.

4



5

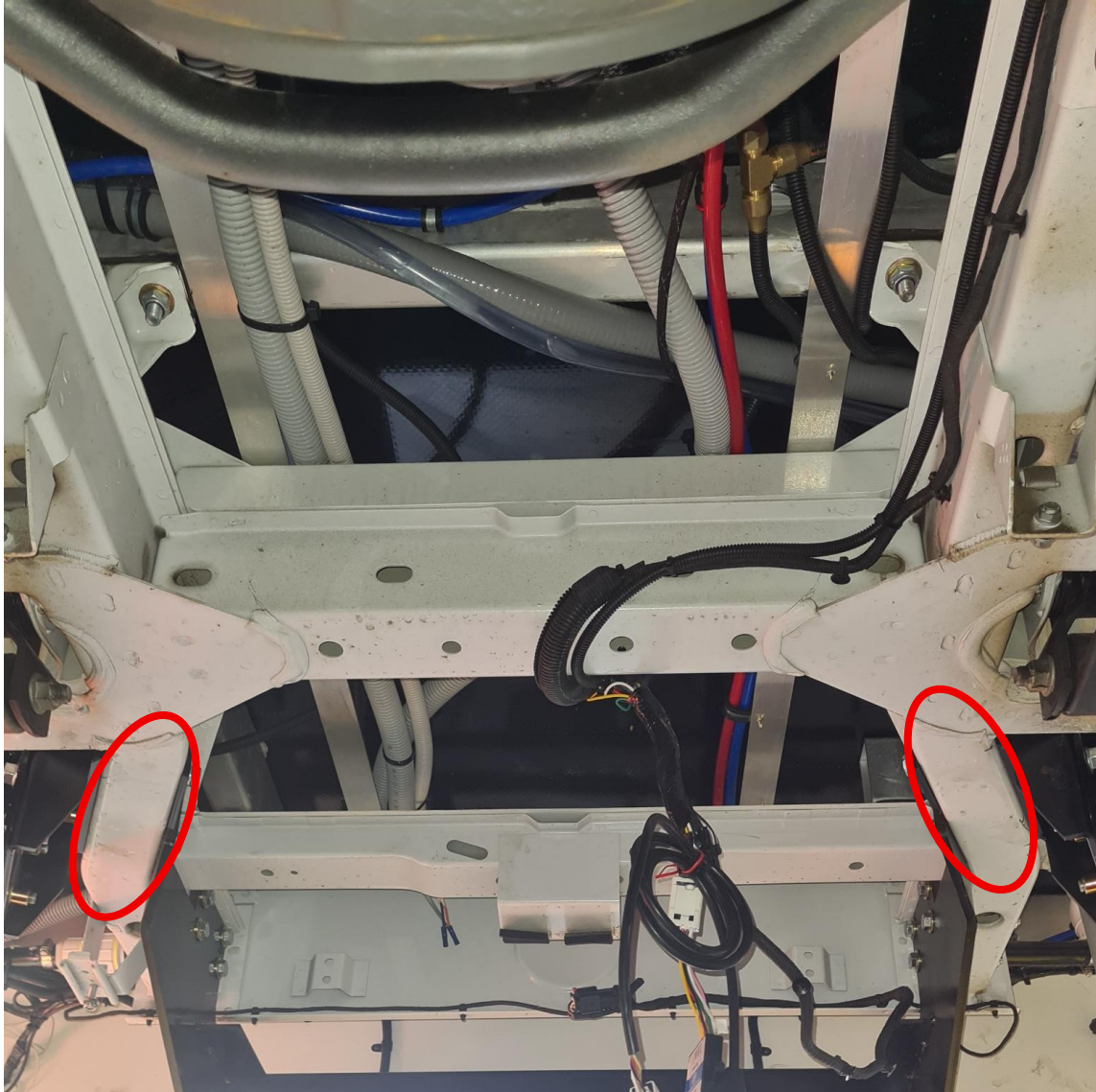


Step 5: Screw the M10 x 30mm into the nut plate to fix the bracket into place then use the M10 x 120mm bolt for the top bracket mount. Torque these to 30NM.

Repeat this for both sides of the vehicle.

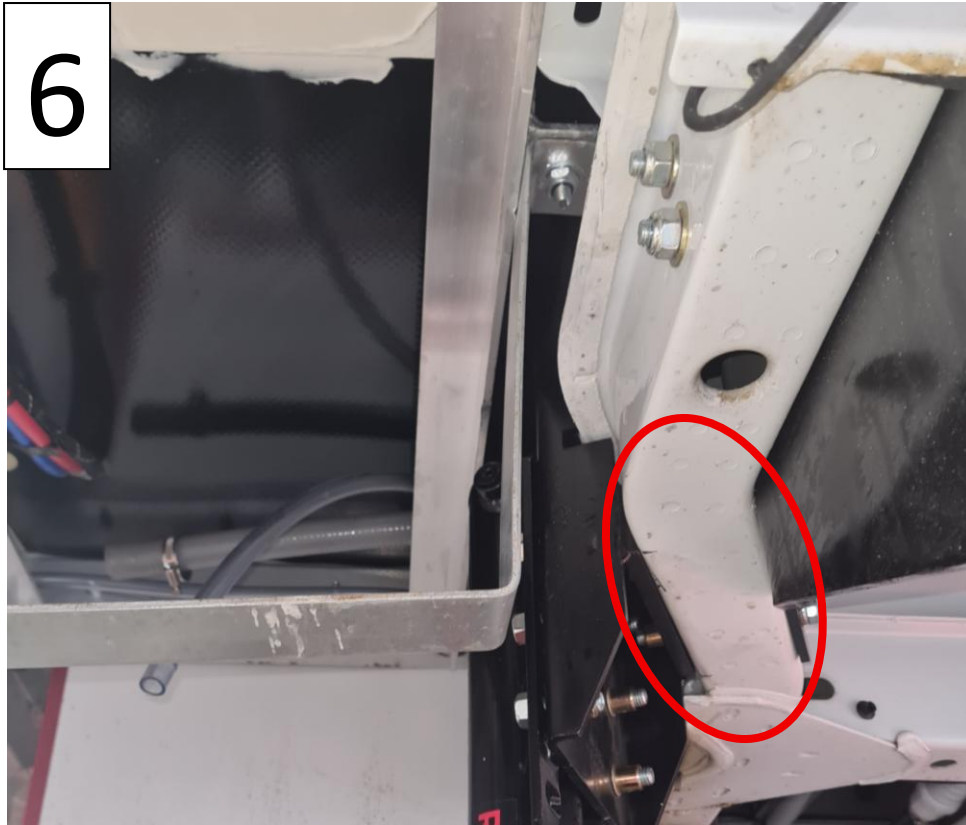
When mounting jacks make sure they swing towards the rear of the vehicle.

Rear bracket locations



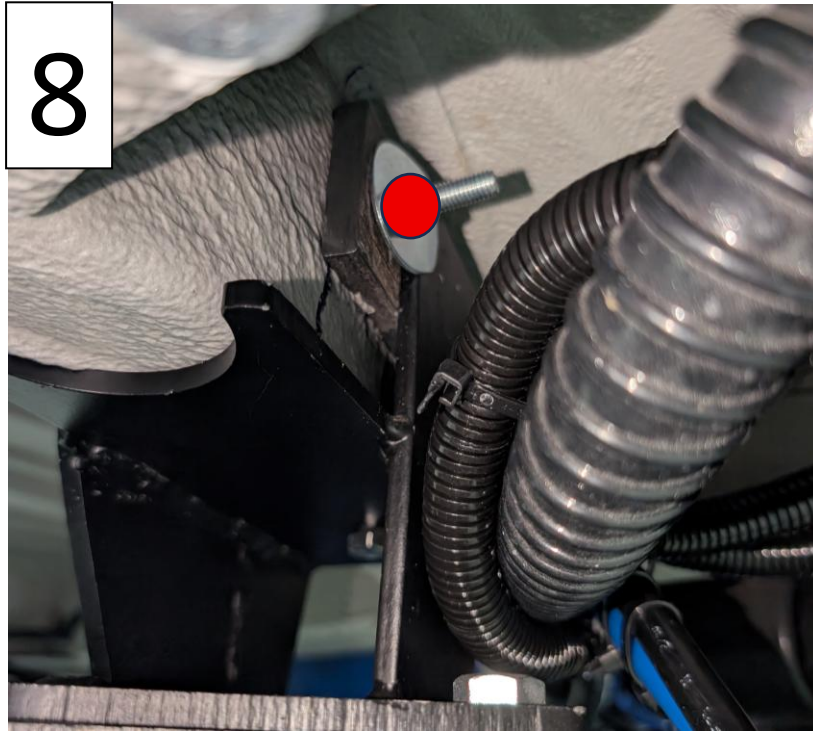
Behind rear axle on the 45-degree bend.

Rear Mounting Guide



Step 6 - 7: Test fit the bracket on the chassis behind the rear wheels where the chassis bends at a 45-degree angle, a new 30 mm hole may need to be drilled to fit the nut plate. There is a left side and a right side bracket make sure to identify before drilling holes.





Step 8: Place the bracket then mark out and drill an 11mm hole into the chassis for the brackets top bolt.

Step 9: Screw the M10 x 30mm into the nut plate to fix the bracket into place then use the M10 x 120mm bolt for the top bracket mount. Torque these to 30NM.
Repeat this for both sides of the vehicle.



Ready to mount Jacks



- For further information contact:
Redfoot Levelling Pty Ltd
Unit 1, 7 Abeles Street
Baringa QLD 4551
Ph 07 5228 0211
www.redfootlevelling.com.au

REDFOOT
LEVELLING